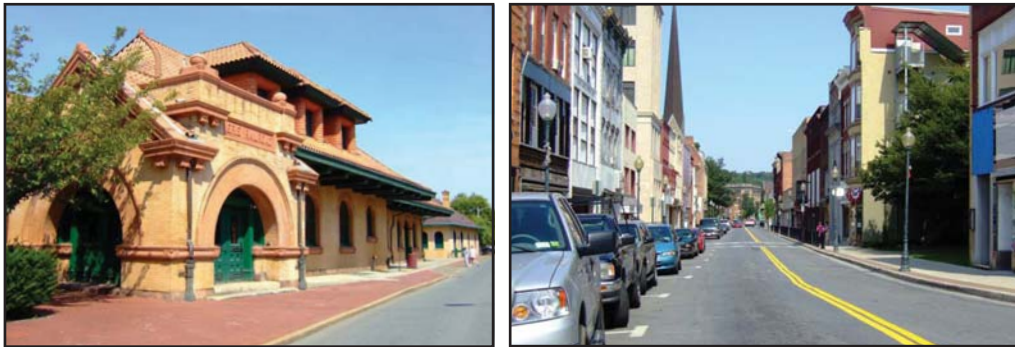


# CITY OF MIDDLETOWN COMPREHENSIVE PLAN

## Task 1 Existing Conditions Technical Memorandum



City of Middletown, New York  
Saccardi & Schiff, Inc.  
August, 2007

# **APPENDIX**

---

## **APPENDIX**

---

### **A. City of Middletown Zoning Code Summary**

Table 1 – Zoning Code Summary

Table 2 – Summary of Zoning Code Uses and Parking Requirements

Table 3 – Parking Requirements

Table 4 – Loading Berth Requirements

Table 5 – Design Requirements

### **B. Land Use Approval Procedures Summary**

Table 6 – Land Use Approval Procedures

### **C. Socio-Economic Tables**

Table 1 – Population

Table 2 – Age Distribution

Table 3 – Race and Ethnicity Distribution

Table 4 – Household Size

Table 5a – Household Income

Table 5b – HUD Income Breakdown

Table 5c – Household Income by Decennial Census Year

Table 5d – Adjusted Household Income

Table 6 – Housing Units by Tenure

Table 7a – Housing Value

Table 7b – Average and Median Income

Table 7c – Housing Values by Decennial Census

Table 7d – Contract Rent

Table 8a – Units in Structures

Table 8b – Year Structure Built

Table 9a – Residential Development Activity

Table 9b – Present Residential Market Tabulation

Table 10 – Overcrowding

Table 11 – Employment by Industrial Sector

Table 12 – Location Quotients

### **D. Land Use Addendum**

Exhibit 2a – Partially Occupied, Underutilized and Vacant Parcels

Exhibit 2b – Partially Occupied and Underutilized Parcels

Exhibit 2c – Existing Land Use and Zoning

Tables – Partially Occupied, Underutilized and Vacant Parcels

## *C. Socio-Economic Tables*

---

**Table 1: Population for the City of Middletown and Orange County, New York, 1980-2012**

Characteristic	City of Middletown, NY		Orange County, NY	
	Number	Percent	Number	Percent
<i>Population</i>				
Current (2005) Estimate	26,067	-	376,392	-
1980	20,917	-	208,841	-
1990	24,160	-	307,647	-
2000	25,388	-	341,367	-
2007*	27,312		382,014	
2012*	29,103		410,038	
Change 1980-1990	3,243	15.5%	98,806	47.3%
Change 1990-2000	1,228	5.1%	33,720	11.0%
Change 2000-2005	679	2.7%	35,025	10.3%
<b>Total Change 1980-2005</b>	<b>5150</b>	<b>24.6%</b>	<b>167551</b>	<b>44.5%</b>
Change 2000-2007*	1,924	7.6%	40,647	11.9%
Change 2007-2012*	1,791	6.6%	28,024	7.3%

*\*Estimated*

References:

1980 data available from [www.infoshare.org](http://www.infoshare.org)

1990 data available from Table P001, S1 File, <http://factfinder.census.gov>

2000 data available from Table P1, S3 file, <http://factfinder.census.gov>

2005 data available from American Fact Finder 2005 Data Profiles, <http://factfinder.census.gov>

2007 and 2012 data from ESRI Business Analyst Online (accessed August 2, 2007)

Table 2: Age Distribution for the City of Middletown and Orange County, New York, 1980-2005(7)

City of Middletown, New York														
Characteristic	1980		1990		2000		2007*		1980-1990		1990-2000		1990-2007*	
	Number	Percent	Number	Percent	Number	Percent	Number	Percent	Number	Percent Change	Number	Percent Change	Number	Percent Change
<i>Age Distribution</i>	20,895	100%	24,160	100%	25,388	100%	27,312	100%	3,265	15.6%	1,228	5.1%	1,924	7.6%
Under 5 years	1,440	6.9%	2,055	8.5%	1,998	7.9%	2,158	7.9%	615	42.7%	(57)	-2.8%	160	8.0%
5 to 9 years	1,460	7.0%	1,809	7.5%	2,034	8.0%	1,939	7.1%	349	23.9%	225	12.4%	(95)	-4.7%
10 to 14 years	1,651	7.9%	1,531	6.3%	1,897	7.5%	2,021	7.4%	(120)	-7.3%	366	23.9%	124	6.5%
15 to 19 years	1,740	8.3%	1,614	6.7%	1,829	7.2%	1,939	7.1%	(126)	-7.2%	215	13.3%	110	6.0%
20 to 24 years	1,716	8.2%	1,950	8.1%	1,693	6.7%	1,912	7.0%	234	13.6%	(257)	-13.2%	219	12.9%
25 to 29 years	1,671	8.0%	2,325	9.6%	1,926	7.6%	1,912	7.0%	654	39.1%	(399)	-17.2%	(14)	-0.7%
30 to 34 years	1,631	7.8%	2,171	9.0%	1,966	7.7%	1,939	7.1%	540	33.1%	(205)	-9.4%	(27)	-1.4%
35 to 44 years	2,172	10.4%	3,452	14.3%	3,967	15.6%	4,042	14.8%	1,280	58.9%	515	14.9%	75	1.9%
45 to 54 years	1,964	9.4%	2,087	8.6%	3,147	12.4%	3,687	13.5%	123	6.3%	1,060	50.8%	540	17.2%
55 to 59 years	1,157	5.5%	844	3.5%	1,101	4.3%	1,611	5.9%	(313)	-27.1%	257	30.5%	510	46.4%
60 to 64 years	974	4.7%	901	3.7%	794	3.1%	1,174	4.3%	(73)	-7.5%	(107)	-11.9%	380	47.9%
65 to 74 years	1,758	8.4%	1,764	7.3%	1,371	5.4%	1,311	4.8%	6	0.3%	(393)	-22.3%	(60)	-4.4%
75 to 84 years	1,247	6.0%	1,218	5.0%	1,193	4.7%	1,038	3.8%	(29)	-2.3%	(25)	-2.1%	(155)	-13.0%
85 years and over	314	1.5%	439	1.8%	472	1.9%	574	2.1%	125	39.8%	33	7.5%	102	21.5%

Orange County, New York														
Characteristic	1980		1990		2000		2005		1980-1990		1990-2000		2000-2005	
	Number	Percent	Number	Percent	Number	Percent	Number	Percent	Number	Percent Change	Number	Percent Change	Number	Percent Change
<i>Age Distribution</i>	205,727	100%	307,647	100%	341,367	100%	359,089	100%	101,920	49.5%	33,720	11.0%	17,722	5.2%
Under 5 years	14,844	7.2%	25,627	8.3%	25,970	7.6%	25,495	7.1%	10,783	72.6%	343	1.3%	(475)	-1.8%
5 to 9 years	15,983	7.8%	24,426	7.9%	28,746	8.4%	28,009	7.8%	8,443	52.8%	4,320	17.7%	(737)	-2.6%
10 to 14 years	18,814	9.1%	22,418	7.3%	28,599	8.4%	28,368	7.9%	3,604	19.2%	6,181	27.6%	(231)	-0.8%
15 to 19 years	20,052	9.7%	22,699	7.4%	25,554	7.5%	26,573	7.4%	2,647	13.2%	2,855	12.6%	1,019	4.0%
20 to 24 years	16,941	8.2%	22,908	7.4%	19,938	5.8%	21,904	6.1%	5,967	35.2%	(2,970)	-13.0%	1,966	9.9%
25 to 29 years	14,880	7.2%	24,995	8.1%	18,928	5.5%	25,136	7.0%	10,115	68.0%	(6,067)	-24.3%	6,208	32.8%
30 to 34 years	17,803	8.7%	28,283	9.2%	24,491	7.2%	22,982	6.4%	10,480	58.9%	(3,792)	-13.4%	(1,509)	-6.2%
35 to 44 years	25,922	12.6%	49,620	16.1%	59,099	17.3%	56,377	15.7%	23,698	91.4%	9,479	19.1%	(2,722)	-4.6%
45 to 54 years	19,570	9.5%	31,720	10.3%	47,221	13.8%	53,504	14.9%	12,150	62.1%	15,501	48.9%	6,283	13.3%
55 to 59 years	9,359	4.5%	11,920	3.9%	16,100	4.7%	20,827	5.8%	2,561	27.4%	4,180	35.1%	4,727	29.4%
60 to 64 years	8,823	4.3%	10,947	3.6%	11,536	3.4%	15,441	4.3%	2,124	24.1%	589	5.4%	3,905	33.8%
65 to 74 years	14,135	6.9%	18,188	5.9%	18,256	5.3%	18,673	5.2%	4,053	28.7%	68	0.4%	417	2.3%
75 to 84 years	6,638	3.2%	10,652	3.5%	12,294	3.6%	11,132	3.1%	4,014	60.5%	1,642	15.4%	(1,162)	-9.5%
85 years and over	1,963	1.0%	3,244	1.1%	4,635	1.4%	3,950	1.1%	1,281	65.3%	1,391	42.9%	(685)	-14.8%

\*Estimated

References:

- 1980 data available from [www.infoshare.org](http://www.infoshare.org)
- 1990 data available from Table P011, S1 File, <http://factfinder.census.gov>
- 2000 data available from Table P8, S3 file, <http://factfinder.census.gov>
- 2005 data available from American Fact Finder 2005 Data Profiles, <http://factfinder.census.gov>
- 2007 and 2012 data from ESRI Business Analyst Online (accessed August 2, 2007)

**Table 3: Race Ethnicity Distribution for the City of Middletown and Orange County, New York, 1980-2007\***

<b>City of Middletown, New York</b>																
	<b>1980</b>		<b>1990</b>		<b>2000</b>		<b>2007*</b>		<b>1980-1990</b>		<b>1990-2000</b>		<b>2000-2007*</b>		<b>1980-2000</b>	
<b>Characteristic</b>	<b>Number</b>	<b>Percent</b>	<b>Number</b>	<b>Percent</b>	<b>Number</b>	<b>Percent</b>	<b>Number</b>	<b>Percent</b>	<b>Number</b>	<b>Percent Change</b>	<b>Number</b>	<b>Percent Change</b>	<b>Number</b>	<b>Percent Change</b>	<b>Number</b>	<b>Percent Change</b>
<i>Not of Hispanic Origin</i>	19,301	100%	20,943	100%	18,984	100%	19,583	100%	1,642	8.5%	(1,959)	-10.3%	599	3.2%	(317)	-1.6%
White	17,713	91.8%	18,057	86.2%	14,566	76.7%	13,708	70.0%	344	1.9%	(3,491)	-24.0%	(858)	-5.9%	(3,147)	-17.8%
Black	1,411	7.3%	2,418	11.5%	3,191	16.8%	3,270	16.7%	1,007	71.4%	773	24.2%	79	2.5%	1,780	126.2%
Native American/ Asian	165	0.9%	445	2.1%	490	2.6%	548	2.8%	280	169.7%	45	9.2%	58	11.9%	325	197.0%
Other	95	0.5%	23	0.1%	737	3.9%	2,056	10.5%	(72)	-75.8%	714	96.9%	1,319	179.0%	642	675.8%
<i>Of Hispanic Origin</i>	1,615	100%	3,217	100%	6,404	100%	7,730	0%	1,602	99.2%	3,187	49.8%	-	-	4,789	296.5%
White	967	59.9%	1,796	55.8%	2,928	45.7%	-	-	829	85.7%	1,132	38.7%	-	-	1,961	202.8%
Black	106	6.6%	266	8.3%	469	7.3%	-	-	160	150.9%	203	43.3%	-	-	363	342.5%
Native American/ Asian	-	0.0%	23	0.7%	127	2.0%	-	-	23	n/a	104	81.9%	-	-	127	n/a
Other	542	33.6%	1,132	35.2%	2,880	45.0%	-	-	590	108.9%	1,748	60.7%	-	-	2,338	431.4%
<b>Total Population</b>	<b>20,916</b>	<b>100%</b>	<b>24,160</b>	<b>100%</b>	<b>25,388</b>	<b>100%</b>	<b>27,313</b>	<b>100%</b>	<b>3,244</b>	<b>15.5%</b>	<b>1,228</b>	<b>5.1%</b>	<b>-</b>	<b>-</b>	<b>4,472</b>	<b>21.4%</b>
Not of Hispanic Origin	19,301	92.3%	20,943	86.7%	18,984	74.78%	19,583	71.70%	1,642	8.5%	(1,959)	-9.4%	-	-	(317)	-1.6%
Of Hispanic Origin	1,615	7.7%	3,217	13.3%	6,404	25.22%	7,730	28.30%	1,602	99.2%	3,187	99.1%	-	-	4,789	296.5%

<b>Orange County, New York</b>																
	<b>1980</b>		<b>1990</b>		<b>2000</b>		<b>2005</b>		<b>1980-1990</b>		<b>1990-2000</b>		<b>2000-2005</b>		<b>1980-2000</b>	
<b>Characteristic</b>	<b>Number</b>	<b>Percent</b>	<b>Number</b>	<b>Percent</b>	<b>Number</b>	<b>Percent</b>	<b>Number</b>	<b>Percent</b>	<b>Number</b>	<b>Percent Change</b>	<b>Number</b>	<b>Percent Change</b>	<b>Number</b>	<b>Percent Change</b>	<b>Number</b>	<b>Percent Change</b>
<i>Not of Hispanic Origin</i>	196,763	100%	286,112	100%	301,527	100%	305,418	100%	89,349	45.4%	15,415	5.4%	3,891	1.3%	104,764	53.2%
White	183,979	93.5%	260,968	91.2%	265,003	87.9%	260,110	85.2%	76,989	41.8%	4,035	1.5%	(4,893)	-1.8%	81,024	44.0%
Black	10,823	5.5%	20,731	7.2%	24,740	8.2%	31,224	10.2%	9,908	91.5%	4,009	19.3%	6,484	26.2%	13,917	128.6%
Native American/ Asian	1,521	0.8%	4,150	1.5%	6,244	2.1%	8,704	2.8%	2,629	172.8%	2,094	50.5%	2,460	39.4%	4,723	310.5%
Other	440	0.2%	263	0.1%	5,540	1.8%	5,380	1.8%	(177)	-40.2%	5,277	2006%	(160)	-2.9%	5,100	1159%
<i>Of Hispanic Origin</i>	9,403	100%	21,535	100%	39,840	100%	53,671	100%	12,132	129.0%	18,305	85.0%	13,831	34.7%	30,437	323.7%
White	5,922	63.0%	12,632	58.7%	20,381	51.2%	-	-	6,710	113.3%	7,749	61.3%	-	-	14,459	244.2%
Black	448	4.8%	1,492	6.9%	1,881	4.7%	-	-	1,044	233.0%	389	26.1%	-	-	1,433	319.9%
Native American/ Asian	14	0.1%	223	1.0%	501	1.3%	-	-	209	1493%	278	124.7%	-	-	487	3479%
Other	3,019	32.1%	7,188	33.4%	17,077	42.9%	-	-	4,169	138.1%	9,889	137.6%	-	-	14,058	465.7%
<b>Total Population</b>	<b>206,166</b>	<b>100%</b>	<b>282,503</b>	<b>100%</b>	<b>341,367</b>	<b>100%</b>	<b>376,392</b>	<b>100%</b>	<b>76,337</b>	<b>37.0%</b>	<b>58,864</b>	<b>20.8%</b>	<b>35,025</b>	<b>10.3%</b>	<b>135,201</b>	<b>65.6%</b>
Not of Hispanic Origin	196,763	95.4%	260,968	92.4%	301,527	88.3%	305,418	81.1%	64,205	32.6%	40,559	15.5%	3,891	1.3%	104,764	53.2%
Of Hispanic Origin	9,403	4.6%	21,535	7.6%	39,840	11.7%	53,671	14.3%	12,132	129.0%	18,305	85.0%	13,831	34.7%	30,437	323.7%

\* Estimated

References:

1980 data available from [www.infoshare.org](http://www.infoshare.org)

1990 data available from Table P010, S1 File, <http://factfinder.census.gov>

2000 data available from Table P6,P7; S3 file, <http://factfinder.census.gov>

2005 data available from American Fact Finder 2005 Data Profiles, <http://factfinder.census.gov>

**Table 4: Household Size for the City of Middletown and Orange County, New York, 1980-2000**

City of Middletown, New York															
Characteristic	1980		1990		2000		2005*		1980-1990		1990-2000		2000-2005*		
	Number	Percent	Number	Percent	Number	Percent	Number	Percent	Number	Percent Change	Number	Percent Change	Number	Percent Change	
<i>Household Size</i>															
One person	1,980	26.6%	2,329	26.5%	2,864	30.3%	-	-	349	17.6%	535	23.0%	-	-	
Two persons	2,248	30.2%	2,530	28.8%	2,529	26.8%	-	-	282	12.5%	(1)	0.0%	-	-	
Three persons	1,249	16.8%	1,578	18.0%	1,549	16.4%	-	-	329	26.3%	(29)	-1.8%	-	-	
Four persons	1,049	14.1%	1,317	15.0%	1,291	13.7%	-	-	268	25.5%	(26)	-2.0%	-	-	
Five persons	550	7.4%	664	7.6%	668	7.1%	-	-	114	20.7%	4	0.6%	-	-	
Six or more persons	379	5.1%	372	4.2%	539	5.7%	-	-	(7)	-1.8%	167	44.9%	-	-	
Total Households	7,455	100%	8,790	100%	9,440	100%	-	-	1,335	17.9%	650	7.4%	-	-	
Average HH Size	2.6080	-	2.6101	-	2.5479	-	-	-	0.0021	0.1%	-0.0622	-2.4%	-	-	
Median HH Size	2	-	2	-	2	-	-	-	0	0.0%	0	0.0%	-	-	

\*data not available

Orange County, New York															
Characteristic	1980		1990		2000		2005*		1980-1990		1990-2000		2000-2005*		
	Number	Percent	Number	Percent	Number	Percent	Number	Percent	Number	Percent Change	Number	Percent Change	Number	Percent Change	
<i>Household Size</i>															
One person	12,788	19.2%	19,975	19.7%	24,592	21.4%	-	-	7,187	56.2%	4,617	23.1%	-	-	
Two persons	19,036	28.7%	29,120	28.7%	33,090	28.8%	-	-	10,084	53.0%	3,970	13.6%	-	-	
Three persons	11,653	17.5%	19,143	18.9%	20,009	17.4%	-	-	7,490	64.3%	866	4.5%	-	-	
Four persons	12,054	18.1%	18,816	18.5%	20,108	17.5%	-	-	6,762	56.1%	1,292	6.9%	-	-	
Five persons	6,760	10.2%	9,045	8.9%	10,332	9.0%	-	-	2,285	33.8%	1,287	14.2%	-	-	
Six or more persons	4,147	6.2%	5,407	5.3%	6,678	5.8%	-	-	1,260	30.4%	1,271	23.5%	-	-	
Total persons	66,438	100%	101,506	100%	114,809	100%	-	-	35,068	52.8%	13,303	13.1%	-	-	
Average HH Size	2.9007	-	2.8429	-	2.8130	-	2.9100	-	-0.0578	-2.0%	-0.0299	-1.1%	0.0970	3.1%	
Median HH Size	3	-	3	-	2	-	-	-	0	0.0%	-1	-33.3%	-	-	

\*data not available

References:

- 1980 data available from [www.infoshare.org](http://www.infoshare.org)
- 1990 data available from Table P027, S1 File, <http://factfinder.census.gov>
- 2000 data available from Table P14, S3 file, <http://factfinder.census.gov>
- 2005 data available from American Fact Finder 2005 Data Profiles, <http://factfinder.census.gov>

**Table 5a: Household Income and Poverty for the City of Middletown and Orange County, New York (adjusted to 2006 dollars), 1980-2005(7)**

<b>City of Middletown, New York</b>							
	<b>1980</b>		<b>1990</b>		<b>2000</b>		<b>2007*</b>
<b>Characteristic</b>	<b>Number</b>	<b>Percent</b>	<b>Number</b>	<b>Percent</b>	<b>Number</b>	<b>Percent</b>	<b>Number</b>
<i>Household Income**</i>							
Average	\$40,606.35	n/a	\$52,244.50	n/a	\$46,469.12	n/a	\$50,201.00
Median	\$40,606.35	n/a	\$52,244.50	n/a	\$46,469.12	n/a	\$64,122.00
<i>Total Persons</i>	19,697	100.0%	23,174	100.0%	24,901	100.0%	27,312
Persons Below Poverty Level	2,771	14.1%	3,210	13.9%	4,355	17.5%	-

<b>Orange County, New York</b>							
	<b>1980</b>		<b>1990</b>		<b>2000</b>		<b>2005</b>
<b>Characteristic</b>	<b>Number</b>	<b>Percent</b>	<b>Number</b>	<b>Percent</b>	<b>Number</b>	<b>Percent</b>	<b>Number</b>
<i>Household Income**</i>							
Average	\$55,372.84	n/a	\$60,603.75	n/a	\$52,665.09	n/a	\$76,418.77
Median	\$55,372.84	n/a	\$64,783.38	n/a	\$68,155.00	n/a	\$65,226.34
<i>Total Persons</i>	195,203	100.0%	294,988	100.0%	328,980	100.0%	-
Persons Below Poverty Level	18,522	9.5%	27,471	9.3%	34,672	10.5%	-

\*data not available

\*\*adjusted to 2006 dollars

**References:**

1980 data available from [www.infoshare.org](http://www.infoshare.org)

1990 data available from [www.infoshare.org](http://www.infoshare.org)

2000 data available from Table P52, S3 file, <http://factfinder.census.gov>

2005 data available from American Fact Finder 2005 Data Profiles, <http://factfinder.census.gov>

2007 and 2012 data from ESRI Business Analyst Online (accessed August 2, 2007)

**Table 5a: Household Income and Poverty for the City of Middletown and Orange County, New York (adjusted to 2006 dollars), 1980-2005(7)**

1980-1990		1990-2000		2000-2007*		1980-2000	
Number	Percent Change	Number	Percent Change	Number	Percent Change	Number	Percent Change
\$11,638.15	28.7%	-\$5,775.38	-11.1%	\$3,731.88	8.0%	\$5,862.77	14.4%
\$11,638.15	28.7%	-\$5,775.38	-11.1%	\$17,652.88	38.0%	\$5,862.77	14.4%
3,477	17.7%	1,727	7.5%	-	-	5,204	26.4%
439	15.8%	1,145	35.7%	-	-	1,584	57.2%

1980-1990		1990-2000		2000-2005		1980-2000	
Number	Percent Change	Number	Percent Change	Number	Percent Change	Number	Percent Change
\$5,230.91	9.4%	-\$7,938.66	-13.1%	\$23,753.68	45.10%	\$21,045.93	38.0%
\$9,410.54	17.0%	\$3,371.62	5.2%	-\$2,928.66	-4.30%	\$9,853.50	17.8%
99,785	51.1%	33,992	11.5%	-	-	133,777	68.5%
8,949	48.3%	7,201	26.2%	-	-0.24%	16,150	87.2%

Table 5b: HUD Income Breakdown for the City of Middletown and Orange County, NY, 1980-2005

City of Middletown, New York															
Characteristic	1980		1990		2000		2005*		1980-1990		1990-2000		2000-2005'		
	Number	Percent	Number	Percent	Number	Percent	Number	Percent	Number	Percent Change	Number	Percent Change	Number	Percent Change	
<i>Households at</i>															
<i>Average HH Income</i>															
30% or less	1,146	15.4%	1,265	14.4%	1,739	18.5%	-	-	119	10.4%	474	37.5%	-	-	
31-50%	959	12.9%	1,212	13.8%	1,131	12.0%	-	-	253	26.4%	(81)	-6.7%	-	-	
51-80%	1,293	17.4%	1,585	18.0%	1,937	20.6%	-	-	292	22.6%	352	22.2%	-	-	
<b>Total Households</b>	<b>7,448</b>	<b>100%</b>	<b>8,814</b>	<b>100%</b>	<b>9,399</b>	<b>100%</b>	<b>-</b>	<b>-</b>	<b>1,366</b>	<b>18.3%</b>	<b>585</b>	<b>6.6%</b>	<b>-</b>	<b>-</b>	
<i>Households at</i>															
<i>Median HH Income</i>															
30% or less	1,146	15.4%	1,265	14.4%	1,739	18.5%	-	-	119	10.4%	474	37.5%	-	-	
31-50%	959	12.9%	1,212	13.8%	1,131	12.0%	-	-	253	26.4%	(81)	-6.7%	-	-	
51-80%	1,293	17.4%	1,585	18.0%	1,937	21%	-	-	292	22.6%	352	22.2%	-	-	
<b>Total Households</b>	<b>7,448</b>	<b>100%</b>	<b>8,814</b>	<b>100%</b>	<b>9,399</b>	<b>100%</b>	<b>-</b>	<b>-</b>	<b>1,366</b>	<b>18.3%</b>	<b>585</b>	<b>6.6%</b>	<b>-</b>	<b>-</b>	
Orange County, New York															
Characteristic	1980		1990		2000		2005		1980-1990		1990-2000		2000-2005		
	Number	Percent	Number	Percent	Number	Percent	Number	Percent	Number	Percent Change	Number	Percent Change	Number	Percent Change	
<i>Households at</i>															
<i>Average HH Income</i>															
30% or less	12,266	18.5%	14,575	14.3%	13,677	11.9%	24,572	19.9%	2,309	18.8%	(898)	-6.2%	10,895	79.	
31-50%	4,391	6.6%	9,289	9.1%	11,158	9.7%	24,500	19.9%	4,898	111.5%	1,869	20.1%	13,342	119.	
51-80%	15,055	22.7%	13,531	13.3%	17,939	15.6%	23,629	19.2%	(1,524)	-10.1%	4,408	32.6%	5,690	31.	
<b>Total Households</b>	<b>66,419</b>	<b>100%</b>	<b>101,730</b>	<b>100%</b>	<b>114,809</b>	<b>100%</b>	<b>123,376</b>	<b>100%</b>	<b>35,311</b>	<b>53.2%</b>	<b>13,079</b>	<b>12.9%</b>	<b>8,567</b>	<b>7.</b>	
<i>Households at</i>															
<i>Median HH Income</i>															
30% or less	12,266	18.5%	14,575	14.3%	19,138	16.7%	24,572	19.9%	2,309	18.8%	4,563	31.3%	5,434	28.	
31-50%	4,391	6.6%	2,989	2.9%	11,756	10.2%	8,357	6.8%	(1,402)	-31.9%	8,767	293.3%	(3,399)	-28.	
51-80%	15,055	22.7%	17,900	17.6%	23,399	20.4%	39,772	32.2%	2,845	18.9%	5,499	30.7%	16,373	70.	
<b>Total Households</b>	<b>66,419</b>	<b>100.0%</b>	<b>101,730</b>	<b>100%</b>	<b>114,809</b>	<b>100%</b>	<b>123,376</b>	<b>100%</b>	<b>35,311</b>	<b>53.2%</b>	<b>13,079</b>	<b>12.9%</b>	<b>8,567</b>	<b>7.</b>	

\*data not available

References:

- 1980 data available from [www.infoshare.org](http://www.infoshare.org)
- 1990 data available from Table P027, S1 File, <http://factfinder.census.gov>
- 2000 data available from Table P14, S3 file, <http://factfinder.census.gov>
- 2005 data available from American Fact Finder 2005 Data Profiles, <http://factfinder.census.gov>

Table 5c: Household Income Brackets by Year for the City of Middletown and Orange County, NY, 1980-2000

TABLE 5C: Households by Household Income, City of Middletown and Orange County, NY 1980-2000

Household Income in 1999 - 2000 Census		
	Orange County	City of Middletown
1 Households with income less than \$10,000 in 1999	7,981	1,085
2 Households with income \$10,000 to \$14,999 in 1999	5,696	623
3 Households with income \$15,000 to \$19,999 in 1999	5,461	749
4 Households with income \$20,000 to \$24,999 in 1999	5,697	595
5 Households with income \$25,000 to \$29,999 in 1999	6,059	560
6 Households with income \$30,000 to \$34,999 in 1999	5,984	554
7 Households with income \$35,000 to \$39,999 in 1999	5,896	581
8 Households with income \$40,000 to \$44,999 in 1999	5,840	597
9 Households with income \$45,000 to \$49,999 in 1999	5,679	561
10 Households with income \$50,000 to \$59,999 in 1999	11,152	777
11 Households with income \$60,000 to \$74,999 in 1999	14,320	956
12 Households with income \$75,000 to \$99,999 in 1999	16,524	837
13 Households with income \$100,000 to \$124,999 in 1999	8,955	475
14 Households with income \$125,000 to \$149,999 in 1999	4,242	133
15 Households with income \$150,000 to \$199,999 in 1999	3,286	210
16 Households with income \$200,000 or more in 1999	2,037	106
	114,809	9,399
Household Income in 1989 - 1990 Census		
	Orange County	City of Middletown
1 Households with income less than \$5,000 in 1989	3,729	400
2 Households with income \$5,000 to \$9,999 in 1989	7,126	865
3 Households with income \$10,000 to \$12,499 in 1989	3,720	474
4 Households with income \$12,500 to \$14,999 in 1989	2,878	324
5 Households with income \$15,000 to \$17,499 in 1989	3,400	414
6 Households with income \$17,500 to \$19,999 in 1989	3,011	393
7 Households with income \$20,000 to \$22,499 in 1989	3,793	467
8 Households with income \$22,500 to \$24,999 in 1989	3,080	321
9 Households with income \$25,000 to \$27,499 in 1989	3,650	404
10 Households with income \$27,500 to \$29,999 in 1989	3,008	315
11 Households with income \$30,000 to \$32,499 in 1989	4,369	430
12 Households with income \$32,500 to \$34,999 in 1989	3,337	250
13 Households with income \$35,000 to \$37,499 in 1989	3,603	308
14 Households with income \$37,500 to \$39,999 in 1989	3,181	285
15 Households with income \$40,000 to \$42,499 in 1989	4,531	380
16 Households with income \$42,500 to \$44,999 in 1989	2,970	201
17 Households with income \$45,000 to \$47,499 in 1989	3,377	254
18 Households with income \$47,500 to \$49,999 in 1989	2,886	212
19 Households with income \$50,000 to \$54,999 in 1989	6,306	465
20 Households with income \$55,000 to \$59,999 in 1989	5,380	324
21 Households with income \$60,000 to \$74,999 in 1989	10,757	649
22 Households with income \$75,000 to \$99,999 in 1989	8,360	343
23 Households with income \$100,000 to \$124,999 in 1989	2,873	185
24 Households with income \$125,000 to \$149,999 in 1989	1,007	41
25 Households with income \$150,000 or more in 1989	1,398	110
	101,730	8,814
Household Income in 1979 - 1980 Census		
	Orange County	City of Middletown
1 Households with an income under \$2,500	2,487	304
2 Households with an income between \$2,500 and \$4,999	4,864	842
3 Households with an income between \$5,000 and \$7,499	4,915	959
4 Households with an income between \$7,500 and \$9,999	4,391	561
5 Households with an income between \$10,000 and \$12,499	4,998	732
6 Households with an income between \$12,500 and \$14,999	4,709	562
7 Households with an income between \$15,000 and \$17,499	5,348	533
8 Households with an income between \$17,500 and \$19,999	5,024	517
9 Households with an income between \$20,000 and \$22,499	5,611	469
10 Households with an income between \$22,500 and \$24,999	4,136	439
11 Households with an income between \$25,000 and \$27,499	4,030	310
12 Households with an income between \$27,500 and \$29,999	3,035	252
13 Households with an income between \$30,000 and \$34,999	4,858	339
14 Households with an income between \$35,000 and \$39,999	2,809	181
15 Households with an income between \$40,000 and \$49,999	2,864	210
16 Households with an income between \$50,000 and \$74,999	1,673	146
17 Households with an income of \$75000 or more	667	92
	66,419	7,448

References:

- 1980 data available from [www.infoshare.org](http://www.infoshare.org)
- 1990 data available from [www.infoshare.org](http://www.infoshare.org)
- 2000 data available from Table P52, S3 file, <http://factfinder.census.gov>
- 2005 data available from American Fact Finder 2005 Data Profiles, <http://factfinder.census.gov>

**Table 5d: Adjusted Household Income for the City of Middletown and Orange County, NY, 1979-1999**

<b>Middletown, NY</b>							
<i>Year</i>	<i>Income Range</i>	<i>CPI</i>	<i>Adjusted Income</i>	<i>Range Avg.</i>	<i>30% of Income Range</i>	<i>50% of Income Range</i>	<i>80% of Income Range</i>
1979 Average	\$12,500.00 \$14,999.00	72.8	\$36,916.21 \$44,296.50	\$40,606.35	\$3,750.00 \$4,499.70	\$6,250.00 \$7,499.50	\$10,000.00 \$11,999.20
1979 Median	\$12,500.00 \$14,999.00	72.8		\$40,606.35	\$3,750.00 \$4,499.70	\$6,250.00 \$7,499.50	\$10,000.00 \$11,999.20
1989 Average	\$30,000.00 \$32,499.00	128.6	\$50,155.52 \$54,333.48	\$52,244.50	\$9,000.00 \$9,749.70	\$15,000.00 \$16,249.50	\$24,000.00 \$25,999.20
1989 Median	\$30,000.00 \$32,499.00	128.6		\$52,244.50	\$9,000.00 \$9,749.70	\$15,000.00 \$16,249.50	\$24,000.00 \$25,999.20
1999 Average	\$35,000.00 \$39,999.00	173.5	\$43,371.76 \$49,566.48	\$46,469.12	\$10,500.00 \$11,999.70	\$17,500.00 \$19,999.50	\$28,000.00 \$31,999.20
1999 Median	\$35,000.00 \$39,999.00	173.5		\$46,469.12	\$10,500.00 \$11,999.70	\$17,500.00 \$19,999.50	\$28,000.00 \$31,999.20
<b>Orange County, NY</b>							
<i>Year</i>	<i>Income Range</i>	<i>CPI</i>	<i>Adjusted Income</i>	<i>Range Avg.</i>	<i>30% of Income Range</i>	<i>50% of Income Range</i>	<i>80% of Income Range</i>
1979 Average	\$17,500.00 \$19,999.00	72.8	\$51,682.69 \$59,062.98	\$55,372.84	\$5,250.00 \$5,999.70	\$8,750.00 \$9,999.50	\$14,000.00 \$15,999.20
1979 Median	\$17,500.00 \$19,999.00	72.8	\$51,682.69 \$59,062.98	\$55,372.84	\$5,250.00 \$5,999.70	\$8,750.00 \$9,999.50	\$14,000.00 \$15,999.20
1989 Average	\$35,000.00 \$37,499.00	128.6	\$58,514.77 \$62,692.73	\$60,603.75	\$10,500.00 \$11,249.70	\$17,500.00 \$18,749.50	\$28,000.00 \$29,999.20
1989 Median	\$37,500.00 \$39,999.00	128.6	\$62,694.40 \$66,872.36	\$64,783.38	\$11,250.00 \$11,999.70	\$18,750.00 \$19,999.50	\$30,000.00 \$31,999.20
1999 Average	\$40,000.00 \$44,999.00	173.5	\$49,567.72 \$55,762.45	\$52,665.09	\$12,000.00 \$13,499.70	\$20,000.00 \$22,499.50	\$32,000.00 \$35,999.20
1999 Median	\$50,000.00 \$59,999.00	173.5	\$61,959.65 \$74,350.35	\$68,155.00	\$15,000.00 \$17,999.70	\$25,000.00 \$29,999.50	\$40,000.00 \$47,999.20

2006 Annual CPI 215.0

<b>Orange County, NY</b>	<i>Income</i>	<i>CPI</i>	<i>Adjusted Income</i>	<i>30% of Income Range</i>	<i>50% of Income Range</i>	<i>80% of Income Range</i>
2005 Average	\$73,753.00	207.5	\$76,418.77	\$22,925.63	\$38,209.39	\$61,135.02
2005 Median	\$62,951.00	207.5	\$65,226.34	\$19,567.90	\$32,613.17	\$52,181.07

**References**

CPI Rates for Northeast Urban Region from the U.S. Department of Labor Bureau of Labor Statistics. Available online from <http://www.bls.gov/cpi>  
 Income data available from [www.infoshare.org](http://www.infoshare.org) and <http://factfinder.census.gov>  
 Income range calculated using weighted income bracket cases in SPSS.

**Table 6: Housing Units (Tenure) for the City of Middletown and Orange County, New York, 1980-2005(7)**

<b>City of Middletown, New York</b>														
<b>Characteristic</b>	<b>1980</b>		<b>1990</b>		<b>2000</b>		<b>2007*</b>		<b>1980-1990</b>		<b>1990-2000</b>		<b>2000-2005'</b>	
	<b>Number</b>	<b>Percent</b>	<b>Number</b>	<b>Percent</b>	<b>Number</b>	<b>Percent</b>	<b>Number</b>	<b>Percent</b>	<b>Number</b>	<b>Percent Change</b>	<b>Number</b>	<b>Percent Change</b>	<b>Number</b>	<b>Percent Change</b>
<i>Housing Units</i>	7,883	100%	9,475	100%	10,141	100%	10,724	100%	1,592	20.2%	666	7.0%	583	5
Occupied Units	7,456	94.6%	8,790	92.8%	9,478	93.5%	10,101	94.2%	1,334	17.9%	688	7.8%	623	6
Vacant Units	427	5.4%	685	7.2%	663	6.5%	623	5.8%	258	60.4%	(22)	-3.2%	(40)	-6
<i>Occupied Housing Units</i>														
<i>Units</i>	7,456	100%	8,790	100%	9,478	100%	10,101	100%	1,334	17.9%	688	7.8%	623	6
Renter Occupied	3,401	45.6%	4,376	49.8%	4,328	45.7%	5,082	50.3%	975	28.7%	(48)	-1.1%	754	17
Owner Occupied	4,055	54.4%	4,414	50.2%	5,150	54.3%	5,019	49.7%	359	8.9%	736	16.7%	(131)	-2
<b>Orange County, New York</b>														
<b>Characteristic</b>	<b>1980</b>		<b>1990</b>		<b>2000</b>		<b>2005</b>		<b>1980-1990</b>		<b>1990-2000</b>		<b>2000-2005</b>	
	<b>Number</b>	<b>Percent</b>	<b>Number</b>	<b>Percent</b>	<b>Number</b>	<b>Percent</b>	<b>Number</b>	<b>Percent</b>	<b>Number</b>	<b>Percent Change</b>	<b>Number</b>	<b>Percent Change</b>	<b>Number</b>	<b>Percent Change</b>
<i>Housing Units</i>	70,972	100%	110,814	100%	122,754	100%	131,436	100%	39,842	56.1%	11,940	10.8%	8,682	7
Total Occupied	66,649	93.9%	101,506	91.6%	114,788	93.5%	123,376	93.9%	34,857	52.3%	13,282	13.1%	8,588	7
Vacant Units	4,323	6.1%	9,308	8.4%	7,966	6.5%	8,060	6.1%	4,985	115.3%	(1,342)	-14.4%	94	1
<i>Occupied Housing Units</i>														
<i>Units</i>	66,649	100%	101,506	100%	114,788	100%	123,376	100.0%	34,857	52.3%	13,282	13.1%	8,588	7
Renter Occupied	22,360	33.5%	33,036	32.5%	76,948	67.0%	40,593	32.9%	10,676	47.7%	43,912	132.9%	(36,355)	-47
Owner Occupied	44,289	66.5%	68,470	67.5%	37,840	33.0%	82,783	67.1%	24,181	54.6%	(30,630)	-44.7%	44,943	118

\*Estimated

References:

- 1980 data available from [www.infoshare.org](http://www.infoshare.org)  
 1990 data available from Table H002,H003, H018; S1 File, <http://factfinder.census.gov>  
 2000 data available from Table H6,H7; S3 file, <http://factfinder.census.gov>  
 2005 data available from American Fact Finder 2005 Data Profiles, <http://factfinder.census.gov>  
 2007 and 2012 data from ESRI Business Analyst Online (accessed August 2, 2007)

**Table 7a: Adjusted Housing Value (to 2006 dollars) for the City of Middletown and Orange County, NY**

<b>Middletown, NY</b>							
<i>Year</i>	<i>Value Range</i>	<i>CPI</i>	<i>Adjusted Value</i>	<i>Range Avg.*</i>	<i>30% of Value Range</i>	<i>50% of Value Range</i>	<i>80% of Value Range</i>
1980 Average	-	82.2	-	-	-	-	-
1980 Median	-	82.2	-	-	-	-	-
1990 Average	\$100,000.00 \$124,999.00	136.3	\$157,740.28 \$197,173.77	\$177,457.02	\$30,000.00 \$37,499.70	\$50,000.00 \$62,499.50	\$80,000.00 \$99,999.20
1990 Median	\$100,000.00 \$124,999.00	136.3	\$157,740.28 \$197,173.77	\$177,457.02	\$30,000.00 \$37,499.70	\$50,000.00 \$62,499.50	\$80,000.00 \$99,999.20
2000 Average	\$90,000.00 \$99,999.00	179.4	\$107,859.53 \$119,842.73	\$113,851.13	\$27,000.00 \$29,999.70	\$45,000.00 \$49,999.50	\$72,000.00 \$79,999.20
2000 Median	\$100,000.00 \$124,999.00	179.4	\$119,843.92 \$149,803.71	\$134,823.82	\$30,000.00 \$37,499.70	\$50,000.00 \$62,499.50	\$80,000.00 \$99,999.20
<b>Orange County, NY</b>							
<i>Year</i>	<i>Value Range</i>	<i>CPI</i>	<i>Adjusted Value</i>	<i>Range Avg.*</i>	<i>30% of Value Range</i>	<i>50% of Value Range</i>	<i>80% of Value Range</i>
1980 Average	-	82.2	-	-	-	-	-
1980 Median	-	82.2	-	-	-	-	-
1990 Average	\$125,000.00 \$149,999.00	136.3	\$197,175.35 \$236,608.84	\$216,892.09	\$37,500.00 \$44,999.70	\$62,500.00 \$74,999.50	\$100,000.00 \$119,999.20
1990 Median	\$125,000.00 \$149,999.00	136.3	\$197,175.35 \$236,608.84	\$216,892.09	\$37,500.00 \$44,999.70	\$62,500.00 \$74,999.50	\$100,000.00 \$119,999.20
2000 Average	\$125,000.00 \$149,999.00	179.4	\$149,804.91 \$179,764.69	\$164,784.80	\$37,500.00 \$44,999.70	\$62,500.00 \$74,999.50	\$100,000.00 \$119,999.20
2000 Median	\$125,000.00 \$149,999.00	179.4	\$149,804.91 \$179,764.69	\$164,784.80	\$37,500.00 \$44,999.70	\$62,500.00 \$74,999.50	\$100,000.00 \$119,999.20
2006 Annual CPI	215.0						
<b>Orange County, NY</b>							
<i>Year</i>	<i>Value Range</i>	<i>CPI</i>	<i>Adjusted Value</i>	<i>Range Avg.*</i>	<i>30% of Value Range</i>	<i>50% of Value Range</i>	<i>80% of Value Range</i>
2005 Average	\$200,000.00 \$299,999.00	207.5	\$207,228.92 \$310,842.34	\$259,035.63	\$62,168.67 \$93,252.70	\$103,614.46 \$155,421.17	\$165,783.13 \$248,673.87
2005 Median	\$200,000.00 \$299,999.00	207.5	\$207,228.92 \$310,842.34	\$259,035.63	\$62,168.67 \$93,252.70	\$103,614.46 \$155,421.17	\$165,783.13 \$248,673.87

**References**

CPI Rates for Northeast Urban Region from the U.S. Department of Labor Bureau of Labor Statistics. Available online from <http://www.bls.gov/cpi>  
Housing value data available from [www.infoshare.org](http://www.infoshare.org) and <http://factfinder.census.gov>  
Average Housing Value calculated using weighted income bracket cases in SPSS.

\*Average based on *Adjusted Value Range* and used for calculations of change in value from 1990-2005.

Table 7b: Average/Median Housing Value 1990-2005 for the City of Middletown and Orange County, New York (adjusted to 2006 dollars)

City of Middletown, New York														
Characteristic	1980*		1990		2000		2007*		1980-1990		1990-2000		2000-2007*	
	Number	Percent	Number	Percent	Number	Percent	Number	Percent	Number	Percent Change	Number	Percent Change	Number	Percent Change
<i>Household Value**</i>														
Average	-	n/a	\$177,457.02	n/a	\$113,851.13	n/a	\$227,435.21	n/a	-	-	-\$63,605.89	-35.8%	\$113,584.08	99.8%
Median	-	n/a	\$177,457.02	n/a	\$134,823.82	n/a	\$242,129.94	n/a	-	-	-\$42,633.20	-24.0%	\$107,306.12	79.8%
Orange County, New York														
Characteristic	1980*		1990		2000		2005		1980-1990		1990-2000		2000-2005	
	Number	Percent	Number	Percent	Number	Percent	Number	Percent	Number	Percent Change	Number	Percent Change	Number	Percent Change
<i>Household Value**</i>														
Average	-	n/a	\$216,892.09	n/a	\$164,784.80	n/a	\$259,035.63	n/a	-	-	-\$52,107.29	-24.0%	\$94,250.83	57.2%
Median	-	n/a	\$216,892.09	n/a	\$164,784.80	n/a	\$259,035.63	n/a	-	-	-\$52,107.29	-24.0%	\$94,250.83	57.2%
*Estimated														
**adjusted to 2006 dollars														

References:

- 1980 data available from [www.infoshare.org](http://www.infoshare.org)
- 1990 data available from [www.infoshare.org](http://www.infoshare.org)
- 2000 data available from Table P52, S3 file, <http://factfinder.census.gov>
- 2005 data available from American Fact Finder 2005 Data Profiles, <http://factfinder.census.gov>
- 2007 and 2012 data from ESRI Business Analyst Online (accessed August 2, 2007)

Table 7c: Housing Values 1990-2005 for the City of Middletown and Orange County, NY

Housing Values - 1990 Census	City of Middletown	Orange County
1 Less than \$15,000	15	138
2 \$15,000 to \$19,999	11	92
3 \$20,000 to \$24,999	12	97
4 \$25,000 to \$29,999	10	137
5 \$30,000 to \$34,999	22	168
6 \$35,000 to \$39,999	15	192
7 \$40,000 to \$44,999	6	214
8 \$45,000 to \$49,999	17	267
9 \$50,000 to \$59,999	57	738
10 \$60,000 to \$74,999	147	1,733
11 \$75,000 to \$99,999	710	6,598
12 \$100,000 to \$124,999	989	9,501
13 \$125,000 to \$149,999	797	11,159
14 \$150,000 to \$174,999	346	9,383
15 \$175,000 to \$199,999	131	5,440
16 \$200,000 to \$249,999	119	4,572
17 \$250,000 to \$299,999	46	2,063
18 \$300,000 to \$399,999	35	1,413
19 \$400,000 to \$499,999	10	372
20 \$500,000 or more	4	386
<b>Total Units</b>	<b>3,499</b>	<b>54,663</b>

Housing Values - 2000 Census	City of Middletown	Orange County
<i>Total:</i>	3,656	65,159
1 Less than \$10,000	-	33
2 \$10,000 to \$14,999	20	46
3 \$15,000 to \$19,999	-	30
4 \$20,000 to \$24,999	22	62
5 \$25,000 to \$29,999	7	39
6 \$30,000 to \$34,999	4	110
7 \$35,000 to \$39,999	8	124
8 \$40,000 to \$49,999	68	390
9 \$50,000 to \$59,999	78	631
10 \$60,000 to \$69,999	153	1,075
11 \$70,000 to \$79,999	240	2,156
12 \$80,000 to \$89,999	589	3,348
13 \$90,000 to \$99,999	460	4,230
14 \$100,000 to \$124,999	1,066	10,550
15 \$125,000 to \$149,999	473	12,480
16 \$150,000 to \$174,999	233	10,772
17 \$175,000 to \$199,999	139	6,335
18 \$200,000 to \$249,999	50	5,894
19 \$250,000 to \$299,999	21	3,279
20 \$300,000 to \$399,999	11	2,125
21 \$400,000 to \$499,999	7	749
22 \$500,000 to \$749,999	7	431
23 \$750,000 to \$999,999	-	101
24 \$1,000,000 or more	-	169

Housing Values - 2005 ACS	City of Middletown**	Orange County
1 Less than \$50,000	34	1,692
2 \$50,000-\$99,999	64	2,310
3 \$100,000-\$149,999	266	4,287
4 \$150,000-\$199,999	1,302	11,669
5 \$200,000-\$299,999	2,404	23,071
6 \$300,000-\$499,999	889	30,643
7 \$500,000-\$999,999	48	8,282
8 \$1,000,000 or more	10	829
<b>Total owner-occupied units</b>	<b>5,017</b>	<b>82,783</b>

\* data not available

\*\*2007 Estimated

References:

1990 data available from Table H023, S1 File, <http://factfinder.census.gov>  
 2000 data available from Table H74, S3 file, <http://factfinder.census.gov>  
 2005 data available for Orange County from Selected Housing Characteristics, from American Fact Finder 2005 Data Profiles.  
 Available online from <http://factfinder.census.gov>  
 2007 and 2012 data from ESRI Business Analyst Online (accessed August 2, 2007)

Table 7d: Cash Rent 1990-2005 for the City of Middletown and Orange County, NY

	City of Middletown	Orange County
<b>Gross Rent - 1980 Census</b>		
Housing units with rent under \$60	6	80
Housing units with rent between \$60 and \$79	83	239
Housing units with rent between \$80 and \$99	48	151
Housing units with rent between \$100 and \$119	63	243
Housing units with rent between \$120 and \$149	135	608
Housing units with rent between \$150 and \$169	160	942
Housing units with rent between \$170 and \$199	318	1,573
Housing units with rent between \$200 and \$249	813	4,384
Housing units with rent between \$250 and \$299	646	4,637
Housing units with rent between \$300 and \$349	485	3,011
Housing units with rent between \$350 and \$399	273	1,699
Housing units with rent between \$400 and \$499	204	1,435
Housing units with rent of \$500 and above	35	532
Total Housing units with cash rent	3,269	19,534
Total housing units with no cash rent	84	1,692
<i>Total Housing units</i>	3,353	21,226

	City of Middletown	Orange County
<b>Contract Rent- 1990 Census</b>		
With cash rent:	4,253	29,708
Less than \$100	70	355
\$100 to \$149	108	722
\$150 to \$199	86	571
\$200 to \$249	155	928
\$250 to \$299	160	990
\$300 to \$349	238	1,730
\$350 to \$399	309	2,155
\$400 to \$449	495	3,195
\$450 to \$499	507	3,214
\$500 to \$549	600	3,869
\$550 to \$599	510	3,137
\$600 to \$649	372	2,642
\$650 to \$699	284	2,130
\$700 to \$749	132	1,345
\$750 to \$999	194	2,313
\$1,000 or more	33	412
No cash rent	106	2,428
<i>Total Housing Units</i>	4,359	32,136

	City of Middletown	Orange County
<b>Contract Rent - 2000 Census</b>		
Total:	5,137	37,388
With cash rent:	5,013	35,018
Less than \$100	13	248
\$100 to \$149	82	387
\$150 to \$199	90	510
\$200 to \$249	89	502
\$250 to \$299	50	335
\$300 to \$349	87	834
\$350 to \$399	182	1,148
\$400 to \$449	375	1,898
\$450 to \$499	461	2,666
\$500 to \$549	473	3,134
\$550 to \$599	562	3,461
\$600 to \$649	582	3,812
\$650 to \$699	467	3,924
\$700 to \$749	491	2,841
\$750 to \$799	421	2,376
\$800 to \$899	404	3,014
\$900 to \$999	161	1,955
\$1,000 to \$1,249	23	1,397
\$1,250 to \$1,499	0	241
\$1,500 to \$1,999	0	273
\$2,000 or more	0	62
No cash rent	124	2,370

References:

US Census Bureau Decennial Census (1980, 1990, 2000)

Table 8a: Units in Structures for the City of Middletown, NY and Orange County, NY, 1980-2000

City of Middletown, New York																
Characteristic	1980		1990		2000		2005*		1980-1990		1990-2000		2000-2005*		1980-2000	
	Number	Percent	Number	Percent	Number	Percent	Number	Percent	Number	Percent Change	Number	Percent Change	Number	Percent Change	Number	Percent Change
<i>Units in Structure</i>	7,882	100%	9,475	100%	10,141	100%	-	-	1,593	16.8%	666	6.6%	-	-	2,259	28.7%
1, detached	3,778	47.9%	4,032	42.6%	4,243	41.8%	-	-	254	6.7%	211	5.2%	-	-	465	12.3%
1, attached	189	2.4%	542	5.7%	616	6.1%	-	-	353	186.8%	74	13.7%	-	-	427	225.9%
2 units	1,614	20.5%	1,902	20.1%	1,881	18.5%	-	-	288	17.8%	(21)	-1.1%	-	-	267	16.5%
3 to 4 units	797	10.1%	1,021	10.8%	1,089	10.7%	-	-	224	28.1%	68	6.7%	-	-	292	36.6%
5 to 9 units	*	-	741	7.8%	917	9.0%	-	-	-	-	176	23.8%	-	-	-	-
10 to 19 units	*	-	695	7.3%	614	6.1%	-	-	-	-	(81)	-11.7%	-	-	-	-
20+ units	*	-	335	3.5%	776	7.7%	-	-	-	-	441	131.6%	-	-	-	-
Mobile home	13	0.2%	4	0.0%	-	0.00%	-	-	(9)	-69.2%	(4)	-100.0%	-	-	(13)	-100.0%
Other	-	-	203	2.1%	5	0.05%	-	-	-	-	(198)	-97.5%	-	-	-	-
5+ units	1,491	19%	1,771	18.7%	2,307	22.75%	-	-	280	18.8%	-	-	-	-	816	54.7%

Orange County, New York																
Characteristic	1980		1990		2000		2005		1980-1990		1990-2000		2000-2005		1980-2005	
	Number	Percent	Number	Percent	Number	Percent	Number	Percent	Number	Percent Change	Number	Percent Change	Number	Percent Change	Number	Percent Change
<i>Units in Structure</i>	70,946	100%	110,814	100%	119,754	100%	359,089	100%	39,868	56.2%	8,940	8.1%	239,335	199.9%	288,143	406.1%
1, detached	44,638	62.9%	67,645	61.0%	76,454	63.8%	25,495	7.1%	23,007	51.5%	8,809	13.0%	(50,959)	-66.7%	(19,143)	-42.9%
1, attached	2,406	3.4%	6,388	5.8%	8,012	6.7%	28,009	7.8%	3,982	165.5%	1,624	25.4%	19,997	249.6%	25,603	1064%
2 units	7,716	10.9%	10,062	9.1%	10,209	8.5%	28,368	7.9%	2,346	30.4%	147	1.5%	18,159	177.9%	20,652	267.7%
3 to 4 units	5,555	7.8%	8,740	7.9%	6,554	5.5%	26,573	7.4%	3,185	57.3%	(2,186)	-25.0%	20,019	305.4%	21,018	378.4%
5 to 9 units	-	-	5,651	5.1%	7,244	6.0%	21,904	6.1%	-	-	1,593	28.2%	14,660	202.4%	-	-
10 to 19 units	-	-	4,250	3.8%	3,351	2.8%	25,136	7.0%	-	-	(899)	-21.2%	21,785	650.1%	-	-
20+ units	-	-	2,606	2.4%	4,273	3.6%	22,982	6.4%	-	-	1,667	64.0%	18,709	437.8%	-	-
Mobile home	2,296	3.2%	4,064	3.7%	3,608	3.0%	56,377	15.7%	1,768	77.0%	(456)	-11.2%	52,769	1462.6%	25	1.1%
Other	-	-	1,408	1.3%	49	0.0%	53,504	14.9%	-	-	(1,359)	-96.5%	53,455	109092%	-	-
5+ units	8,335	11.7%	12,507	11.3%	14,868	12.4%	70,022	19.5%	4,172	50.1%	2,361	18.9%	55,154	371.0%	61,687	740.1%

References:

1980 data available from [www.infoshare.org](http://www.infoshare.org)

1990 data available from Table H041, S1 File, <http://factfinder.census.gov>

2000 data available from Table H30, S3 file, <http://factfinder.census.gov>

2005 data available from American Fact Finder 2005 Data Profiles, <http://factfinder.census.gov>

\*data not available

**Table 8b: Year Structure Built for the City of Middletown and Orange County, NY (2000 Data)**

<b>Characteristic</b>	<b>City of Middletown, NY</b>		<b>Orange County, NY</b>	
	<b>Number</b>	<b>Percent</b>	<b>Number</b>	<b>Percent</b>
<i>Year Structure Built</i>				
Built 1999 to March 2000	14	0.14%	2,401	1.96%
Built 1995 to 1998	185	1.82%	6,542	5.33%
Built 1990 to 1994	404	3.98%	7,538	6.14%
Built 1980 to 1989	1,167	11.51%	18,787	15.30%
Built 1970 to 1979	1,282	12.64%	19,116	15.57%
Built 1960 to 1969	1,013	9.99%	16,311	13.29%
Built 1950 to 1959	1,156	11.40%	14,762	12.03%
Built 1940 to 1949	703	6.93%	7,984	6.50%
Built 1939 or earlier	4,217	41.58%	29,313	23.88%
Total Structures	10,141	100%	122,754	100%

References:

Data available from 2000 Census, Table H34, S3 File, <http://factfinder.census.gov>

Table 9a: 2000-2006 Residential Development Activity for the City of Middletown and Orange County, New York

City of Middletown, New York															
		2000		2001		2002		2003		2004		2005		2006	
Characteristic	Number	Percent	Number	Percent	Number	Percent	Number	Percent	Number	Percent	Number	Percent	Number	Percent	
<i>Building Permits</i>															
Total Units	47	100%	57	100%	56	100%	52	100%	54	100%	52	100%	41	100%	
Single Family	47	100%	57	100%	56	100%	52	100%	54	100%	52	100%	41	100%	
Multi-Family	0	0%	0	0%	0	0%	0	0%	0	0%	0	0%	0	0%	
<i>Multi-Family Units</i>															
2 units structures	0	0%	0	0%	0	0%	0	0%	0	0%	0	0%	0	0%	
3-4 units structures	0	0%	0	0%	0	0%	0	0%	0	0%	0	0%	0	0%	
5+ unit structures	0	0%	0	0%	0	0%	0	0%	0	0%	0	0%	0	0%	

Orange County, New York															
		2000		2001		2002		2003		2004		2005		2006	
Characteristic	Number	Percent	Number	Percent	Number	Percent	Number	Percent	Number	Percent	Number	Percent	Number	Percent	
<i>Building Permits</i>															
Total Units	2,000	100%	2,012	100%	2,129	100%	1,765	100%	1,714	100%	1,830	100%	1,340	100%	
Single Family	1,598	79.9%	1,621	80.6%	1,727	81.1%	1,302	73.8%	1,480	86.3%	1,301	71.1%	1,033	77.1%	
Multi-Family	402	20.1%	391	19.4%	402	18.9%	463	26.2%	234	13.7%	529	28.9%	307	22.9%	
<i>Multi-Family Units</i>															
2 units structures	34	8.5%	12	3.1%	10	2.5%	6	1.3%	4	1.7%	14	2.6%	14	4.6%	
3-4 units structures	18	4.5%	7	1.8%	305	75.9%	11	2.4%	4	1.7%	7	1.3%	10	3.3%	
5+ unit structures	350	87.1%	372	95.1%	87	21.6%	446	96.3%	226	96.6%	508	96.0%	283	92.2%	

References

Data available from U.S. Census Bureau Building Permits Survey.  
 Available online from <http://socds.huduser.org/permits/index.html>

**Table 9b: Present Housing Market for the City of Middletown (June 2007)**

<b>Structure Type</b>	<b>Price</b>	<b>Size (sq. ft., Rooms/Units)</b>	<b>Location</b>	<b>School District</b>	<b>Style/Year Built</b>
Single family, detached	\$4,900,000	3,420 5 br, 3 baths	Middletown 10941	Valley Central	1835 Colonial, 236
Single family, detached	\$1,950,000	4,000 5 br, 3.5 baths	Middletown 10940	Minisink Valley sd	
Single family, detached	\$1,900,000	200 2 units	Middletown 10940	Middletown sd	1892
Single family, detached	\$1,750,000	5,759 5 br, 7.5 bath	Middletown 10941	Pine Bush sd	
Single family, detached	\$1,750,000	2,417 3 br, 2 bath	Middletown 10940	Goshen sd	1848, 100 acres
Single family, detached	\$949,900	4,230 6 br, 3 baths	Scotchtown, Middletown 10941	Pine Bush sd	Log house, 20.27
Single family, detached	\$949,887	3,500 5 br, 3 baths	Middletown 10940	Minisink Valley sd	
Single family, detached	\$870,000	4,000 4 br, 4.5 baths	Middletown 10941	Pine Bush sd	
Single family, detached	\$785,000	2,420 3 br, 2.5 baths	Middletown 10941	Pine Bush sd	
Single family, detached	\$749,000	3,816 4 br, 3 baths	Middletown 10940	Minisink Valley sd	
Single family, detached	\$749,000	3,900 4 br, 3 baths	Middletown 10940	Minisink Valley sd	
Single family, detached	\$749,000	1,984 2 units	Middletown 10940	Middletown sd	1850
Single family, detached	\$699,000	3,742 5 br, 3 baths	Hamptonburgh, Middletown 10940	Goshen sd	
Single family, detached	\$679,000	3,704 5 br, 3 baths	Middletown 10941	Goshen sd	
Single family, detached	\$674,900	3,525 4 br, 2.5 baths	Middletown 10941	Goshen sd	
Single family, detached	\$650,000	3,400 5 br, 3.5 bath	Middletown 10940	Minisink Valley sd	
Single family, detached	\$649,900	3,327 4 br, 2.5 baths	Middletown 10940	Valley Central	
Single family, detached	\$649,000	3,250 4 br, 2.5 baths	Middletown 10940	Minisink Valley sd	
Single family, detached	\$648,999	3,000 3 br, 2.5 baths	Middletown 10940	Valley Central	
Single family, detached	\$629,900	4,600 5 br, 3 bath	Middletown 10940	Middletown sd	
Single family, detached	\$599,900	2,800 3 br, 3 baths	Fairways at Wallkill, Middletown	Middletown sd	
Single family, detached	\$599,000	6,000 5 br, 3.5 baths	Middletown 10940	Middletown sd	1907
Single family, detached	\$594,900	1,968 4 br, 1 bath	Middletown 10940	Pine Bush sd	1897 Folk Victorian
Single family, detached	\$589,900	3,044 4 br, 2.5 baths	Middletown 10941	Pine Bush sd	
Single family, detached	\$569,000	3,888 4 br, 3 baths	Wallkill, Middletown 10940	Pine Bush sd	
Single family, detached	\$549,900	2,519 3 br, 2.5 baths	Middletown 10940	Minisink Valley sd	2007
Single family, detached	\$549,900	2,582 4 br, 2.5 baths	Howell Estates, Middletown 10940	Minisink Valley sd	
Single family, detached	\$548,000	4,681 7 br, 4.5 baths	Middletown 10941	Valley Central	
Single family, detached	\$535,500	3,750 2 units	Middletown 10940	Middletown sd	
Single family, detached	\$529,900	3,086 4 br, 3 baths	Middletown 10940	Valley Central	
Single family, detached	\$529,900	3,044 4 br, 3 baths	Hamptonburgh, Middletown 10940	Goshen sd	
Single family, detached	\$524,900	3,960 4 br, 5 baths	Middletown 10940	Middletown sd	1800 Colonial with
Single family, detached	\$510,900	4 br, 2.5 baths	Middletown 10940	Valley Central	
Single family, detached	\$504,900	3,045 4 br, 2.5 baths	Restorative Estates, Wallkill,	Minisink Valley sd	2007
Single family, detached	\$499,989	3,288 4 br, 2.5 baths	Middletown 10941	Pine Bush sd	
Single family, detached	\$499,900	2,570 4 br, 2.5 baths	Middletown 10940	Middletown sd	
Single family, detached	\$499,900	3,700 4 br, 3 baths	Middletown 10940		
Single family, detached	\$499,000	1,800 3 br, 2.5 baths	Middletown 10940	Minisink Valley sd	log house, 16.5 acres
Single family, detached	\$499,000	3,700 4 br, 2.5 baths	Middletown 10940	Minisink Valley sd	
Single family, detached	\$499,000	3,288 4 br, 2.5 baths	Middletown 10941	Pine Bush sd	2007
Single family, detached	\$494,900	2,915 4 br, 2.5 baths	Restorative Estates, Wallkill,	Minisink Valley sd	2007
Single family, detached	\$494,900	3,426 4 br, 2.5 baths	Restorative Estates, Wallkill,	Minisink Valley sd	2007
Single family, detached	\$489,900	3,030 3 br, 3 baths	Middletown 10940	Middletown sd	
Single family, detached	\$489,900	2,988 4 br, 4.5 bath	Middletown 10940	Minisink Valley sd	
Single family, detached	\$489,900	2,946 3 br, 3 baths	Restorative Estates, Wallkill,	Minisink Valley sd	2007
Condo/Townhouse/Coop	\$479,000	2,500 3 br, 2.5 baths	Middletown 10940	Middletown sd	
Single family, detached	\$474,000	3,071 4 br, 2.5 baths	Middletown 10940	Minisink Valley sd	2007
Single family, detached	\$469,900	3,240 4 br, 2.5 baths	Middletown 10941	Valley Central	1935
Single family, detached	\$469,900	3,000 3 br, 3.5 baths	Fairways at Wallkill, Middletown	Middletown sd	

**Table 9b: Present Housing Market for the City of Middletown (June 2007)**

<b>Structure Type</b>	<b>Price</b>	<b>Size (sq. ft., Rooms/Units)</b>	<b>Location</b>	<b>School District</b>	<b>Style/Year Built</b>
Single family, detached	\$464,900	2,769 4 br, 2.5 baths	Walkkill, Middletown 10940	Minisink Valley sd	2007
Single family, detached	\$459,900	2,638 4 br, 2.5 baths	Middletown 10940	Minisink Valley sd	
Single family, attached	\$459,900	4,200 2 structures	Middletown 10940	Middletown sd	duplex
Single family, detached	\$454,900	2,758 4 br, 2.5 baths	Restorative Estates, Walkkill,	Minisink Valley sd	2007
Single family, detached	\$449,999	2,500 4 br, 2.5 baths	Middletown 10941	Valley Central	
Single family, detached	\$449,900	5 br, 4 baths	Middletown		Queen Ann Victorian
Single family, detached	\$449,900	2,690 4 br, 2.5 baths	Fair Oaks, Middletown 10940	Pine Bush sd	2007
Single family, detached	\$449,900	3,083 4 br, 2.5 baths	Fair Oaks, Middletown 10940	Pine Bush sd	2007
Single family, detached	\$449,900	3,266 2 units	Middletown 10940	Middletown sd	1924
Single family, detached	\$449,900	2,628 2 structures	144-146 Wisner, Middletown 10940	Middletown sd	1900
Single family, detached	\$449,900	2,628 4 br, 2.5 baths	Middletown 10940	Middletown sd	
Single family, detached	\$449,500	1,960 4 br, 2.5 baths	Middletown 10940	Minisink Valley sd	
Single family, detached	\$449,500	2,699 3 br, 1.5 baths	Middletown 10940	Middletown sd	1865 Gothic Revival
Single family, detached	\$449,000	2,800 4 br, 2.5 baths	Hamptonburgh, Middletown 10940	Goshen sd	
Single family, detached	\$449,000	2,842 4 br, 2.5 baths	Middletown 10940	Minisink Valley sd	2007
Single family, detached	\$440,000	2,928 4 br, 2.5 baths	Middletown 10940	Minisink Valley sd	
Single family, detached	\$439,900		Middletown		
Single family, detached	\$439,900	2,744 3 br, 2.5 baths	Middletown 10940	Pine Bush sd	2007
Single family, detached	\$439,900	2,184 4 br, 2.5 baths	Middletown 10940	Minisink Valley sd	
Single family, detached	\$439,900	2,834 4 br, 2.5 baths	Middletown 10940	Middletown sd	
Single family, detached	\$438,500	2,661 4 br, 3 baths	Bullville, Middletown 10941	Pine Bush sd	2007 Victorian
Single family, detached	\$429,900	3,500 7 br, 4 baths	Middletown 10940	Minisink Valley sd	1860
Single family, detached	\$429,900	2,758 4 br, 2.5 baths	Middletown 10940	Middletown sd	
Single family, detached	\$429,900	2,675 4 br, 2 baths	Middletown 10940	Minisink Valley sd	1830
Single family, detached	\$429,900	3,000 6 br, 2.5 baths	Middletown 10940	Middletown sd	1913
Single family, detached	\$429,900	2,540 4 br, 3.5 baths	Middletown 10940	Minisink Valley sd	
Single family, detached	\$429,000	2,805 4 br, 2.5 baths	Middletown 10940	Minisink Valley sd	2007
Single family, detached	\$429,000	2,685 4 br, 2.5 baths	Middletown 10940	Minisink Valley sd	2007
Single family, detached	\$425,000	4,100 9 br, 3 baths	Middletown 10940	Goshen sd	1876 Colonial Revival;
Single family, detached	\$424,900	3,829 6 br, 4 baths	Middletown 10940	Middletown sd	1893 Queen Anne
Single family, detached	\$424,900	2,619 4 br, 2.5 baths	Middletown 10940	Middletown sd	
Single family, detached	\$420,000	2,200 3 br, 2 bath	Middletown 10940	Minisink Valley sd	2007
Single family, detached	\$419,901	2,400 4 br, 2.5 baths	Middletown 10940	Middletown sd	
Single family, detached	\$419,900	2,587 4 br, 2.5 baths	Middletown 10940	Pine Bush sd	2007
Single family, detached	\$419,900	2,500 4 br, 2.5 baths	Middletown 10941	Pine Bush sd	
Single family, detached	\$418,999	2,606 4 br, 3 baths	Middletown 10940	Pine Bush sd	
Single family, detached	\$415,000	2,700 4 br, 2.5 baths	Middletown 10940	Middletown sd	2007
Single family, detached	\$415,000	3,260 4 br, 2.5 baths	Middletown 10941	Pine Bush sd	
Single family, detached	\$414,900	2,412 4 br, 2.5 baths	Middletown 10940	Middletown sd	
Single family, detached	\$410,000	2,800 4 br, 2.5 baths	Middletown 10940	Middletown sd	
Single family, detached	\$409,900	2,800 4 br, 2.5 baths	Walkkill, Middletown 10941	Middletown sd	
Single family, detached	\$409,000	2,860 3 br, 2.5 baths	Middletown 10941	Valley Central	
Single family, detached	\$409,000	2,200 4 br, 2.5 baths	Middletown 10940	Minisink Valley sd	
Single family, detached	\$409,000	2,800 3 br, 3 baths	Middletown 10941	Goshen sd	2007
Single family, detached	\$409,000	2,355 4 br, 2.5 baths	Middletown 10940	Minisink Valley sd	2007
Single family, detached	\$399,999	2,300 3 br, 2.5 baths	Middletown 10941	Valley Central	
Single family, detached	\$399,999	2,500 4 br, 2.5 baths	Middletown 10940	Middletown sd	
Single family, detached	\$399,900	2,738 3 br, 3 baths	Middletown 10940	Minisink Valley sd	2007
Single family, detached	\$399,900	2,311 4 br, 2.5 baths	Middletown 10940	Middletown sd	2007

**Table 9b: Present Housing Market for the City of Middletown (June 2007)**

<b>Structure Type</b>	<b>Price</b>	<b>Size (sq. ft., Rooms/Units)</b>	<b>Location</b>	<b>School District</b>	<b>Style/Year Built</b>
Single family, detached	\$399,900	2,154 3 br, 2 bath	Winterton, Middletown 10940	Pine Bush sd	1947
Single family, detached	\$399,900	2,600 5 br, 3 baths	Middletown 10940	Minisink Valley sd	
Single family, detached	\$399,900	2,600 4 br, 2.5 baths	Middletown 10940	Middletown sd	
Single family, detached	\$399,900	2,500 4 br, 2.5 baths	Walkkill, Middletown 10940	Middletown sd	2007
Single family, detached	\$399,900	2,683 4 br, 2.5 baths	Middletown 10940	Middletown sd	
Single family, detached	\$399,000	2,700 4 br, 2.5 baths	Middletown 10941	Middletown sd	
Single family, detached	\$399,000	1,850 4 br, 3.5 baths	Middletown 10940	Middletown sd	
Single family, detached	\$399,000	2,120 4 br, 2.5 baths	Middletown 10940	Minisink Valley sd	2007
Condo	\$397,500	2 br, 1.5 baths	Middletown		
Condo/Townhouse/Coop	\$397,500	1,267 2 br, 2 bath	The Fairways, Middletown 10940	Middletown sd	
Single family, detached	\$395,000	1,261 3 br, 2.5 baths	Walkkill, Middletown 10941	Valley Central	
Single family, detached	\$395,000	2,858 4 br, 2.5 baths	Middletown 10941	Pine Bush sd	
Single family, detached	\$393,900	2,500 4 br, 2.5 baths	Middletown 10940	Minisink Valley sd	
Single family, detached	\$390,000	2,614 3 br, 2.5 baths	Middletown 10941	Minisink Valley sd	
Single family, detached	\$389,999	3,000 2 units	Middletown 10940	Middletown sd	
Single family, detached	\$389,900	2,287 4 br, 2 baths	Middletown 10940	Middletown sd	2007
Single family, detached	\$389,900	2,287 4 br, 2 baths	Middletown 10940	Middletown sd	
Single family, detached	\$389,900	2,374 4 br, 2.5 baths	Middletown 10940	Middletown sd	
Single family, detached	\$389,900	2,600 4 br, 2.5 baths	Goshen, Middletown 10940	Goshen sd	2007
Single family, detached	\$389,000	2,604 4 br, 2.5 baths	Mt. Hope, Middletown 10940	Minisink Valley sd	
Single family, detached	\$389,000	2,320 4 br, 2.5 baths	Middletown 10940	Minisink Valley sd	
Single family, detached	\$385,000	2,733 3 br, 2.5 baths	Middletown 10940	Pine Bush sd	
Single family, attached	\$385,000	2 units	Middletown 10940	Middletown sd	
Single family, detached	\$385,000	1,316 3 br, 1 baths	Middletown 10940	Middletown sd	1870
Single family, attached	\$385,000	3,136 2 units	Middletown 10940	Middletown sd	
Single family, detached	\$384,900	3,937 4 units	Middletown 10940	Middletown sd	
Single family, detached	\$384,900	2,582 4 br, 2.5 baths	Middletown 10940	Middletown sd	2007
Condo/Townhouse/Coop	\$379,900	1,815 2 br, 2.5 baths	Liberty Commons, Scotchtown,	Pine Bush sd	
Single family, detached	\$379,900	1,008 4 br, 2.5 baths	Middletown 10940	Middletown sd	
Single family, detached	\$379,900	2,371 4 br, 2.5 baths	Middletown 10940	Middletown sd	2007
Single family, detached	\$379,900	2,408 4 br, 2.5 baths	Middletown 10940	Middletown sd	
Single family, detached	\$379,000		Middletown		bi-level ranch
Single family, detached	\$379,000	2,400 4 br, 2.5 baths	Walkkill, Middletown 10940	Middletown sd	
Single family, detached	\$379,000	2 units	Middletown 10940	Middletown sd	2007
Single family, detached	\$375,000	2,400 3 br, 3 baths	Middletown 10940	Middletown sd	
Single family, detached	\$375,000	2,946 4 units	Middletown 10940	Middletown sd	1900
Single family, detached	\$369,900	2,300 4 br, 2.5 baths	Middletown 10940	Middletown sd	
Single family, detached	\$369,900	3,610 5 br, 3.5 baths	Middletown 10940	Middletown sd	1957
Single family, detached	\$369,700	2,528 2 units	Middletown 10940	Middletown sd	1870
Single family, detached	\$369,000	2,398 4 br, 1.5 baths	Middletown 10940	Middletown sd	1897 foursquare
Single family, detached	\$369,000	3,261 3 br, 2.5 baths	Middletown 10940	Minisink Valley sd	
Single family, detached	\$367,000	2,256 6 br, 3 baths	Middletown 10940	Middletown sd	1955
Single family, detached	\$365,000	2,206 4 br, 2.5 baths	Middletown 10940	Middletown sd	
Single family, detached	\$365,000	2,055 4 br, 2.5 baths	Walkkill, Middletown 10940	Middletown sd	
Single family, detached	\$364,900	2,352 3 br, 2.5 baths	Middletown 10941	Pine Bush sd	
Single family, detached	\$359,990	2,300 4 br, 2.5 baths	Middletown 10940	Pine Bush sd	
Single family, detached	\$359,900	2,876 4 br, 2 baths	Middletown 10940	Middletown sd	1800
Single family, detached	\$359,900	2,464 4 br, 3 baths	Middletown 10940	Middletown sd	
Single family, detached	\$359,900	1,528 2 br, 1.5 baths	Middletown 10940	Middletown sd	

**Table 9b: Present Housing Market for the City of Middletown (June 2007)**

<b>Structure Type</b>	<b>Price</b>	<b>Size (sq. ft., Rooms/Units)</b>	<b>Location</b>	<b>School District</b>	<b>Style/Year Built</b>
Single family, detached	\$359,900	2,300 3 br, 3 baths	Middletown 10940	Middletown sd	
Single family, detached	\$359,000	3 br, 2.5 baths	Middletown		
Single family, detached	\$359,000	2,523 4 br, 2.5 baths	Middletown 10940	Middletown sd	
Single family, detached	\$355,000	2,840 4 br, 4 bath	Middletown 10940	Middletown sd	1898 Victorian
Single family, detached	\$355,000	2,400 4 br, 2.5 baths	Walkkill, Middletown 10940	Middletown sd	2007
Single family, detached	\$351,900	1,800 3 br, 2.5 baths	Middletown 10940	Middletown sd	
Single family, detached	\$350,000	1,941 4 br, 2.5 baths	Middletown 10940	Middletown sd	2007
Single family, detached	\$350,000	1,800 3 br, 2.5 baths	Middletown 10940	Pine Bush sd	
Single family, detached	\$349,999	2,450 3 br, 1.5 baths	Middletown 10940	Middletown sd	
Single family, detached	\$349,900	2,110 3 br, 1.5 baths	Middletown 10940	Minisink Valley sd	
Single family, detached	\$349,900	2,848 4 br, 3 baths	Middletown 10940	Minisink Valley sd	
Single family, detached	\$349,900	2,604 3 br, 2 bath	Middletown 10940	Middletown sd	
Single family, detached	\$349,900	2,400 4 br, 2.5 baths	Greenville, Middletown 10940	Minisink Valley sd	2007
Single family, detached	\$349,900	2,800 4 br, 2 baths	Walkkill, Middletown 10940	Middletown sd	
Single family, detached	\$349,899	2,400 5 br, 3 baths	Middletown 10940	Pine Bush sd	
Single family, detached	\$349,000	1,224 3 br, 1 baths	Middletown 10940	Middletown sd	1950
Single family, detached	\$348,000	2,088 3 br, 2.5 baths	Middletown 10940	Middletown sd	
Single family, detached	\$345,000	1,820 3 br, 2.5 baths	Middletown 10940	Middletown sd	
Single family, detached	\$344,900	1,664 4 br, 2.5 baths	Middletown 10941	Pine Bush sd	
Single family, detached	\$344,000	1,660 3 br, 2 bath	Scotchtown, Middletown 10941	Pine Bush sd	
Single family, detached	\$340,000	1,960 4 br, 1.5 baths	Middletown 10941	Middletown sd	
Single family, detached	\$339,900	3,816 5 br, 3.5 bath	Middletown 10940	Middletown sd	
Single family, attached	\$339,900	1,475 2 br, 2.5 baths	Liberty Commons, Scotchtown,	Pine Bush sd	
Single family, detached	\$339,900	2,706 4 br, 2.5 baths	Middletown 10940	Minisink Valley sd	
Condo/Townhouse/Coop	\$339,000	1,756 2 br, 2.5 baths	Middletown 10941	Pine Bush sd	
Single family, detached	\$339,000	2,164 5 br, 2 bath	Middletown 10940	Pine Bush sd	
Single family, detached	\$339,000	2,000 3 br, 2.5 baths	Wawayanda, Middletown 10940	Minisink Valley sd	2007
Single family, detached	\$335,000	2,000 4 br, 2.5 baths	Middletown 10941	Pine Bush sd	
Single family, detached	\$334,950	1,752 3 br, 2.5 baths	Middletown 10940	Middletown sd	
Single family, detached	\$334,500	1,468 2 br, 2 baths	Middletown 10940	Middletown sd	1949
Single family, detached	\$333,000	2,352 4 br, 3 baths	Middletown 10940	Middletown sd	
Single family, detached	\$329,999	2,256 3 br, 2.5 baths	Middletown 10940	Middletown sd	
Single family, detached	\$329,900	2,250 2 br, 1.5 baths	Middletown 10940	Middletown sd	2007
Condo/Townhouse/Coop	\$329,900	1,288 1 br, 1.5 bath	Oak Hill Manor, Scotchtown,	Pine Bush sd	
Single family, detached	\$329,900	2,584 5 br, 2 bath	Mt. Hope, Middletown 10940	Minisink Valley sd	1951
Single family, detached	\$329,900	2,044 3 br, 1.5 baths	Scotchtown, Middletown 10941	Pine Bush sd	
Single family, detached	\$329,900	1,331 2 br, 2.5 baths	The Fairways, Middletown 10940	Middletown sd	
Single family, detached	\$329,899	2,200 4 br, 1.5 baths	Middletown 10941	Middletown sd	
Single family, detached	\$329,000	1,700 3 br, 2.5 baths	Middletown 10940	Middletown sd	2007
Single family, detached	\$329,000	2,395 2 units	Middletown 10940	Middletown sd	1900 Italianate
Single family, detached	\$329,000	1,984 2 units	Middletown 10940	Middletown sd	1900
Single family, detached	\$329,000	1,844 3 br, 2 bath	Middletown 10941	Pine Bush sd	
Single family, detached	\$328,999	2,000 4 br, 2.5 baths	Middletown 10941	Pine Bush sd	
Single family, detached	\$327,900	1,900 3 br, 1.5 baths	Middletown 10940	Middletown sd	
Single family, detached	\$327,000	2,796 4 br, 3 baths	Middletown 10940	Middletown sd	
Single family, detached	\$326,990	1,540 2 br, 2 baths	Wildflowers, Middletown 10940	Middletown sd	2007
Single family, detached	\$325,999	1,850 4 br, 3 baths	Middletown 10940	Middletown sd	
Single family, detached	\$325,000	2,450 4 br, 3 baths	Middletown 10940	Middletown sd	
Single family, detached	\$325,000	2,200 3 br, 2.5 baths	Mechanicstown, Middletown 10940	Middletown sd	2007

**Table 9b: Present Housing Market for the City of Middletown (June 2007)**

<b>Structure Type</b>	<b>Price</b>	<b>Size (sq. ft., Rooms/Units)</b>	<b>Location</b>	<b>School District</b>	<b>Style/Year Built</b>
Single family, detached	\$325,000	2,216 2 units	Middletown 10940	Middletown sd	
Single family, detached	\$325,000	2,450 4 br, 1.5 baths	Middletown 10940	Middletown sd	1900 Queen Anne
Single family, detached	\$325,000	2,450 4 br, 3 baths	Middletown 10940	Middletown sd	
Single family, detached	\$325,000	1,092 4 br, 1.5 baths	Walkkill, Middletown 10940	Pine Bush sd	
Single family, detached	\$325,000	2,928 3 br, 2 bath	Middletown 10940	Middletown sd	
Single family, detached	\$325,000	1,350 3 br, 2 bath	Middletown 10940	Middletown sd	
Single family, detached	\$324,900	3,183 4 br, 2.5 baths	Middletown 10940	Middletown sd	1893
Single family, detached	\$324,900	1,676 3 br, 1.5 baths	Middletown 10940	Minisink Valley sd	
Single family, detached	\$324,500	2,200 4 br, 1.5 baths	Middletown 10941	Pine Bush sd	
Single family, detached	\$324,000	1,556 3 br, 2 bath	Middletown 10940	Minisink Valley sd	
Single family, detached	\$319,999	1,828 3 br, 2.5 baths	Middletown 10940	Middletown sd	1923 Colonial Revival
Single family, detached	\$319,900	1,696 3 br, 1.5 baths	Middletown 10941	Pine Bush sd	
Single family, detached	\$319,900	1,744 3 br, 1.5 baths	Middletown 10941	Pine Bush sd	
Single family, detached	\$319,900	1,764 4 br, 2 baths	Scotchtown, Middletown 10941	Pine Bush sd	
Single family, detached	\$319,900	2,100 4 br, 3 baths	Middletown 10940	Middletown sd	2007
Single family, detached	\$319,900	1,800 3 br, 2.5 baths	Middletown 10940	Middletown sd	
Single family, detached	\$319,900	2,374 3 br, 1.5 baths	Middletown 10940	Middletown sd	1908 foursquare
Single family, detached	\$319,900	1,821 2 units	Middletown 10940	Middletown sd	1913
Single family, detached	\$319,900	1,632 3 br, 1.5 baths	Middletown 10941	Pine Bush sd	
Single family, detached	\$319,754	2,006 4 br, 2.5 baths	Middletown 10940	Middletown sd	
Single family, detached	\$319,000	1,890 4 br, 1.5 baths	Middletown 10941	Pine Bush sd	
Single family, detached	\$319,000	2 units	Middletown 10941	Valley Central	
Single family, detached	\$319,000	2,304 2 units	Middletown 10940	Middletown sd	1900
Single family, detached	\$319,000	2,376 2 units	Middletown 10940	Middletown sd	1880
Single family, detached	\$318,000	1,880 3 br, 2.5 baths	Mt. Hope, Middletown 10940	Minisink Valley sd	
Single family, detached	\$317,500	1,796 3 br, 2.5 baths	Middletown 10941	Pine Bush sd	
Single family, detached	\$316,000	2,400 3 br, 2.5 baths	Middletown 10940	Middletown sd	
Single family, detached	\$315,900	2,344 5 br, 2.5 bath	Middletown 10940	Middletown sd	1890 Victorian
Single family, detached	\$315,000	2,100 3 br, 2 bath	Middletown 10941	Pine Bush sd	
Single family, detached	\$315,000	2,118 4 br, 2 baths	Middletown 10940	Middletown sd	1910
Single family, detached	\$315,000	1,615 3 br, 1.5 baths	Middletown 10940	Middletown sd	1923 foursquare
Single family, detached	\$315,000	1,752 3 br, 2.5 baths	Middletown 10940	Middletown sd	
Single family, detached	\$315,000	2,000 3 br, 2 bath	Middletown 10940	Middletown sd	18 acres
Single family, detached	\$314,900	1,821 3 br, 2 bath	Middletown 10941	Valley Central	
Single family, detached	\$314,900	1,775 4 br, 2 baths	Middletown 10941	Pine Bush sd	
Single family, detached	\$314,900	1,864 3 br, 2 bath	Middletown 10940	Minisink Valley sd	
Single family, detached	\$310,000	1,700 3 br, 2.5 baths	Middletown 10940	Middletown sd	2007
Single family, detached	\$310,000	1,302 3 br, 2 bath	Middletown 10940	Middletown sd	
Single family, detached	\$310,000	2,058 4 br, 2 baths	Middletown 10940	Middletown sd	
Single family, detached	\$310,000	2,184 4 br, 2.5 baths	Wawayanda, Middletown 10940	Minisink Valley sd	
Single family, detached	\$310,000	1,764 3 br, 1.5 baths	Middletown 10941	Pine Bush sd	
Single family, detached	\$309,999	1,590 4 br, 1.5 baths	Middletown 10940	Middletown sd	1957
Single family, detached	\$309,000	4 br, 2 baths	Middletown		Colonial
Single family, detached	\$309,000	1,700 3 br, 2.5 baths	Middletown 10940	Middletown sd	2007
Single family, detached	\$309,000	1,952 4 br, 2 baths	Middletown 10940	Middletown sd	1903 Victorian Folk
Single family, detached	\$305,000	1,788 3 br, 2 bath	Middletown 10940	Minisink Valley sd	
Single family, detached	\$305,000	1,917 3 units	Middletown 10940	Middletown sd	1900
Single family, detached	\$305,000	1,526 3 br, 1.5 baths	Middletown 10940	Middletown sd	1949
Single family, detached	\$304,900	1,806 3 br, 3 baths	Middletown 10940	Middletown sd	

**Table 9b: Present Housing Market for the City of Middletown (June 2007)**

<b>Structure Type</b>	<b>Price</b>	<b>Size (sq. ft., Rooms/Units)</b>	<b>Location</b>	<b>School District</b>	<b>Style/Year Built</b>
Single family, detached	\$300,000	1,642 3 br, 2 bath	Middletown 10940	Middletown sd	2007
Single family, detached	\$300,000	2,155 4 br, 2.5 baths	Walkkill, Middletown 10940	Middletown sd	
Single family, detached	\$300,000	1,582 3 br, 2 bath	Middletown 10940	Middletown sd	
Single family, detached	\$299,999	1,750 3 br, 2 bath	Middletown 10940	Minisink Valley sd	
Single family, detached	\$299,999	1,976 3 br, 2.5 baths	Middletown 10940	Minisink Valley sd	
Single family, detached	\$299,900	1,796 3 br, 1.5 baths	Scotchtown, Middletown 10941	Pine Bush sd	
Single family, detached	\$299,900	1,000 2 br, 2 bath	Middletown 10941	Goshen sd	
Single family, detached	\$299,900	2,152 2 br, 1.5 baths	Middletown 10940	Middletown sd	1955
Single family, detached	\$299,900	1,508 3 br, 2 bath	Middletown 10940	Pine Bush sd	
Single family, detached	\$299,900	1,648 3 br, 2.5 baths	Middletown 10940	Minisink Valley sd	
Single family, detached	\$299,900	2,340 4 br, 1.5 baths	Middletown 10940	Middletown sd	1903
Single family, detached	\$299,900	2,456 3 br, 2.5 baths	Middletown 10940	Middletown sd	1956
Single family, detached	\$299,900	1,800 3 br, 1.5 baths	Middletown 10940	Middletown sd	1900
Single family, detached	\$299,900	2,000 3 br, 2 bath	Middletown 10940	Middletown sd	2007
Single family, detached	\$299,899	1,760 5 br, 1.5 baths	Middletown 10940	Middletown sd	1900 foursquare
Single family, detached	\$299,898	1,976 4 br, 2 baths	Middletown 10941	Middletown sd	1930
Single family, detached	\$299,850	1,840 2 units	Middletown 10940	Middletown sd	1909
Condo/Townhouse/Coop	\$299,400	1,993 3 br, 3 baths	Pondside at SH, Middletown 10940	Middletown sd	
Single family, detached	\$299,001	1,800 3 br, 2.5 baths	Scotchtown, Middletown 10941	Middletown sd	
Single family, detached	\$299,000	1,416 2 units	Middletown 10940	Middletown sd	1935 foursquare
Single family, detached	\$299,000	1,902 4 br, 2 baths	Middletown 10940	Middletown sd	1945 Colonial Revival
Single family, detached	\$299,000	2,200 2 units	Middletown 10940	Middletown sd	1860
Single family, detached	\$299,000	2,783 2 units	Middletown 10940	Middletown sd	1900
Single family, detached	\$295,900	2,180 2 units	Middletown 10940	Middletown sd	1883
Single family, detached	\$295,800	2,351 4 br, 2.5 baths	Middletown 10940	Middletown sd	
Single family, detached	\$295,500	2,024 2 units	Middletown 10940	Middletown sd	1930
Single family, detached	\$295,000	2,084 4 br, 1.5 baths	Middletown 10940	Middletown sd	
Single family, detached	\$294,900	1,586 4 br, 1.5 baths	Middletown 10940	Middletown sd	
Condo/Townhouse/Coop	\$294,000	1,253 2 br, 1.5 baths	Lakeridge, Middletown 10940	Middletown sd	
Single family, detached	\$294,000	2,527 4 units	Middletown 10940	Middletown sd	1900
Single family, detached	\$294,000	1,200 3 br, 2 bath	Middletown 10940	Minisink Valley sd	
Single family, attached	\$294,000	1,253 2 br, 1.5 baths	Middletown 10940	Middletown sd	
Single family, detached	\$293,894	1,996 4 br, 1.5 baths	Middletown 10940	Middletown sd	1900 Colonial Revival
Single family, detached	\$290,000	952 6 br, 2 baths	Middletown 10940	Middletown sd	1942
Single family, detached	\$289,999	2,952 4 br, 1.5 baths	Middletown 10940	Middletown sd	1890
Single family, detached	\$289,999	2,274 2 units	Middletown 10940	Middletown sd	
Single family, detached	\$289,900	1,654 3 br, 1.5 baths	Middletown 10940	Pine Bush sd	
Single family, detached	\$289,900	1,597 4 br, 1.5 baths	Middletown 10940	Pine Bush sd	
Single family, detached	\$289,900	1,880 5 br, 2 bath	Middletown 10940	Middletown sd	
Single family, detached	\$289,900	1,352 3 br, 2 bath	Middletown 10940	Middletown sd	
Single family, detached	\$289,900	3,464 3 units	Middletown 10940	Middletown sd	1900
Single family, detached	\$289,900	1,252 3 br, 2.5 baths	Middletown 10940	Middletown sd	
Single family, detached	\$289,900	2,016 2 units	Middletown 10940	Middletown sd	1900 foursquare
Single family, detached	\$289,500	1,650 2 units	Middletown 10940	Middletown sd	2007
Single family, detached	\$289,000	2,500 4 br, 2 baths	Middletown 10940	Middletown sd	
Single family, detached	\$289,000	1,750 3 br, 2 bath	Middletown 10940	Middletown sd	
Single family, detached	\$289,000	1,836 2 units	Middletown 10940	Middletown sd	1918
Single family, detached	\$287,300	2,376 4 br, 3 baths	Middletown 10940	Middletown sd	
Single family, detached	\$285,000	2,234 2 units	Middletown 10940	Middletown sd	1890 Victorian Folk

**Table 9b: Present Housing Market for the City of Middletown (June 2007)**

<b>Structure Type</b>	<b>Price</b>	<b>Size (sq. ft.)</b>	<b>Rooms/Units</b>	<b>Location</b>	<b>School District</b>	<b>Style/Year Built</b>
Single family, detached	\$285,000	2,760	2 units	Middletown 10940	Middletown sd	1900
Single family, detached	\$285,000	1,945	2 units	Middletown 10940	Middletown sd	1912
Single family, detached	\$284,900	1,540	4 br, 2 baths	Middletown 10940	Middletown sd	
Single family, detached	\$284,900	1,824	4 br, 1.5 baths	Middletown 10940	Middletown sd	1918
Single family, detached	\$282,000	1,260	3 br, 2 bath	Middletown 10940	Middletown sd	
Single family, detached	\$280,000	1,320	3 br, 1 bath	Far Hill Estates, Middletown 10940	Middletown sd	2007
Condo/Townhouse/Coop	\$280,000	1,496	3 br, 2.5 baths	Middletown 10940	Middletown sd	
Single family, detached	\$279,999		4 br	Middletown		bi-level ranch
Single family, detached	\$279,999	2,200	4 br, 2 baths	Middletown 10940	Middletown sd	
Single family, detached	\$279,900	2,432	3 br, 2.5 baths	Middletown 10940	Middletown sd	1908 foursquare
Single family, detached	\$279,900	1,760	3 br, 2 bath	Winterton, Middletown 10940	Minisink Valley sd	
Single family, detached	\$279,900	1,600	4 br, 2 baths	Middletown 10940	Middletown sd	
Single family, detached	\$279,900	2,035	4 br, 2 baths	Middletown 10940	Middletown sd	1932
Single family, detached	\$279,900	1,632	3 br, 1.5 baths	Middletown 10940	Middletown sd	
Single family, attached	\$279,900		3 units	Middletown 10940	Middletown sd	1920
Single family, detached	\$279,900	1,577	3 br, 2 bath	Middletown 10940	Middletown sd	1920
Single family, detached	\$279,900	2,210	4 br, 1.5 baths	Middletown 10940	Middletown sd	1910
Single family, detached	\$279,500	1,260	3 br, 2.5 baths	Middletown 10940	Middletown sd	1910
Single family, detached	\$279,000	1,616	4 br, 2 baths	Middletown 10940	Middletown sd	
Single family, detached	\$279,000	2,238	2 units	Middletown 10940	Middletown sd	1923
Single family, detached	\$279,000	2,300	2 units	Middletown 10940	Middletown sd	1920
Single family, detached	\$279,000	1,848	4 br, 2 baths	Middletown 10940	Middletown sd	
Single family, detached	\$279,000	988	3 br, 1 baths	Middletown 10940	Middletown sd	
Single family, detached	\$279,000	2,100	4 br, 2 baths	Middletown 10940		
Single family, detached	\$275,900	2,040	5 br, 2 baths	Middletown 10940	Middletown sd	
Single family, detached	\$275,000	1,300	3 br, 2 bath	Wawayanda, Middletown 10940	Minisink Valley sd	
Single family, detached	\$275,000	1,700	3 br, 2 bath	Far Hill Estates, Middletown 10940	Middletown sd	
Single family, detached	\$274,900		4.5 br, 2 baths	Middletown		Cape Cod
Single family, detached	\$274,900	2,802	2 units	Middletown 10940	Middletown sd	1864
Single family, detached	\$274,900	2,260	5 br, 2 baths	Middletown 10940	Middletown sd	
Single family, detached	\$274,900		4 br, 2.5 baths	Middletown 10940	Middletown sd	
Single family, detached	\$274,750	2,060	5 br, 2 baths	Middletown 10940	Middletown sd	1870
Single family, detached	\$274,500	2,082	2 units	Middletown 10940	Middletown sd	1900
Condo/Townhouse/Coop	\$274,000	1,496	3 br, 2.5 baths	Middletown 10940	Middletown sd	
Single family, detached	\$272,900	2,024	2 units	Middletown 10940	Middletown sd	1895 Victorian
Single family, detached	\$271,900	1,305	4 br, 2 baths	Middletown 10940	Middletown sd	
Single family, detached	\$269,900	1,920	4 br, 2 baths	Middletown 10940	Middletown sd	1920 foursquare
Single family, detached	\$269,900	1,400	3 br, 1 bath	Middletown 10940	Middletown sd	1957
Single family, detached	\$269,900	2,248	2 units	Middletown 10940	Middletown sd	1868
Single family, detached	\$269,900	1,568	4 br, 1.5 baths	Middletown 10940	Middletown sd	1940
Single family, detached	\$269,900	1,650	4 br, 1 bath	Middletown 10941	Pine Bush sd	
Condo/Townhouse/Coop	\$269,887	1,703	2 br, 2.5 baths	Scotchtown Mews, Middletown	Middletown sd	2007
Single family, attached	\$269,000	1,680	2 units	Middletown 10940	Middletown sd	1920
Condo/Townhouse/Coop	\$269,000	1,608	3 br, 1.5 baths	Canterbury Knolls, Middletown	Middletown sd	
Single family, detached	\$269,000	2,092	4 br, 2 baths	Middletown 10940	Middletown sd	1890
Single family, detached	\$268,999	2,160	2 units	Middletown 10940	Middletown sd	
Single family, detached	\$268,500	1,576	3 br, 2 bath	Middletown 10940	Middletown sd	1934
Single family, detached	\$268,200	1,344	3 br, 1 baths	Middletown 10940	Middletown sd	1930
Single family, detached	\$268,000	1,608	3 br, 1.5 baths	Canterbury Knolls, Middletown	Middletown sd	

**Table 9b: Present Housing Market for the City of Middletown (June 2007)**

<b>Structure Type</b>	<b>Price</b>	<b>Size (sq. ft., Rooms/Units)</b>	<b>Location</b>	<b>School District</b>	<b>Style/Year Built</b>
Single family, detached	\$268,000	1,608 3 br, 2.5 baths	Middletown 10940	Middletown sd	
Single family, detached	\$268,000	1,600 3 br, 1 baths	Middletown 10940	Middletown sd	1927
Single family, detached	\$265,900	1,750 3 br, 1 baths	Middletown 10940	Middletown sd	1953
Single family, detached	\$265,000	1,284 3 br, 1.5 baths	Middletown 10940	Minisink sd	
Single family, detached	\$265,000	1,100 3 br, 2 bath	Middletown 10940	Middletown sd	1930
Single family, detached	\$265,000	1,900 4 br, 2 baths	Middletown 10940	Middletown sd	1948
Single family, detached	\$265,000	2,150 5 br, 2 baths	Middletown 10940	Middletown sd	
Single family, detached	\$264,900	1,184 4 br, 2 baths	Middletown 10940	Pine Bush sd	
Single family, detached	\$264,900	1,900 3 br, 2 bath	Middletown 10940	Middletown sd	
Single family, detached	\$262,500	1,425 3 br, 1.5 baths	Middletown 10940	Middletown sd	
Single family, detached	\$261,900	1,184 3 br, 2 bath	Middletown 10940	Middletown sd	
Single family, detached	\$260,900	1,176 3 br, 1 bath	Middletown 10940	Middletown sd	1957 ranch
Single family, detached	\$260,000	1,608 3 br, 1.5 baths	Middletown 10940	Middletown sd	
Single family, detached	\$260,000	1,075 4 br, 1 bath	Wallkill, Middletown 10940	Middletown sd	1949
Single family, detached	\$259,999	1,346 3 br, 1.5 baths	Middletown 10940	Middletown sd	
Single family, detached	\$259,999	1,730 3 br, 1.5 baths	Middletown 10940	Middletown sd	1930
Single family, detached	\$259,900	1,848 3 br, 2 bath	Middletown 10940	Pine Bush sd	
Single family, detached	\$259,900	1,144 3 br, 1.5 baths	Middletown 10940	Middletown sd	
Single family, detached	\$259,900	2 units	Middletown 10940	Middletown sd	1893
Single family, detached	\$259,800	1,728 2 br, 1 bath	Middletown 10940	Minisink Valley sd	1927
Condo/Townhouse/Coop	\$259,500	1,300 2 br, 2 bath	Clemson Park, Middletown 10940	Middletown sd	
Single family, detached	\$259,500	1,400 3 br, 1 baths	Middletown 10940	Middletown sd	
Single family, detached	\$259,000	1,736 2 units	Middletown 10940	Middletown sd	1890 Victorian Folk
Single family, detached	\$259,000	1,448 4 br, 2 baths	Middletown 10940	Middletown sd	1910
Single family, detached	\$258,000	1,720 3 br, 2 bath	Middletown 10940	Middletown sd	1898
Single family, detached	\$255,000	3 br, 2 bath	Middletown 10940	Middletown sd	
Single family, detached	\$255,000	1,036 3 br, 1 baths	Middletown 10940	Middletown sd	
Single family, detached	\$255,000	1,704 4 br, 1.5 baths	Middletown 10940	Middletown sd	
Single family, detached	\$254,900		Middletown		
Single family, detached	\$254,900	1,608 3 br, 1.5 baths	Canterbury Knolls, WallKill,	Middletown sd	
Single family, detached	\$254,900	1,632 3 br, 2 bath	Middletown 10940	Middletown sd	1870
Single family, detached	\$252,000	1,192 3 br, 1.5 baths	Middletown 10940	Middletown sd	
Single family, detached	\$250,000	1,638 3 br, 1.5 baths	Canterbury Knolls, WallKill,	Middletown sd	
Condo/Townhouse/Coop	\$250,000	1,692 3 br, 2.5 baths	Middletown 10940	Middletown sd	
Single family, detached	\$250,000	1,432 3 br, 1.5 baths	Middletown 10940	Middletown sd	1907
Single family, detached	\$249,999	3 br, 1 baths	Middletown 10940	Middletown sd	1933
Single family, detached	\$249,900	3 br, 1 bath	Middletown		
Single family, detached	\$249,900	1,536 2 units	Middletown 10940	Middletown sd	1920 foursquare
Single family, detached	\$249,900	1,570 3 br, 2 bath	Canterbury Knolls, Middletown	Middletown sd	
Single family, detached	\$249,900	2,037 2 units	Middletown 10940	Middletown sd	1910
Single family, detached	\$249,900	1,344 3 br, 1 bath	Middletown 10940	Minisink sd	
Single family, detached	\$249,900	1,954 2 units	Middletown 10940	Middletown sd	1920
Single family, detached	\$249,900	1,400 3 br, 1 baths	Middletown 10940	Middletown sd	1933
Condo/Townhouse/Coop	\$249,900	1,919 3 br, 2.5 baths	Deer Run, Middletown 10940	Middletown sd	
Single family, detached	\$249,900	4,396 2 units	Middletown 10940	Middletown sd	1890
Single family, detached	\$249,900	1,400 3 br, 1 baths	Middletown 10940	Middletown sd	1933
Single family, detached	\$249,900	1,660 2 units	Middletown 10940	Middletown sd	1890
Single family, detached	\$249,899	1,860 3 br, 2 bath	Middletown 10940	Minisink Valley sd	1945
Single family, detached	\$249,000	1,400 3 br, 1.5 baths	Middletown 10940	Middletown sd	

**Table 9b: Present Housing Market for the City of Middletown (June 2007)**

<b>Structure Type</b>	<b>Price</b>	<b>Size (sq. ft.)</b>	<b>Rooms/Units</b>	<b>Location</b>	<b>School District</b>	<b>Style/Year Built</b>
Condo/Townhouse/Coop	\$247,900	1,507	3 br, 2.5 baths	Mountainside Hills, Middletown	Middletown sd	
Condo/Townhouse/Coop	\$245,900	1,241	2 br, 2.5 baths	Middletown 10940	Middletown sd	
Single family, detached	\$245,000	1,200	2 br, 1.5 baths	Middletown 10940	Middletown sd	1900
Single family, detached	\$245,000	2,880	4 br, 2 baths	Middletown 10940	Middletown sd	1800 Colonial with
Single family, detached	\$245,000	1,512	2 units	Middletown 10940	Middletown sd	1900
Single family, detached	\$245,000	1,412	4 br, 1 bath	Middletown 10940	Middletown sd	1900
Single family, detached	\$245,000	1,274	3 br, 1.5 baths	Middletown 10940	Middletown sd	1927
Single family, detached	\$245,000		6 br, 2.5 baths	Middletown 10940	Middletown sd	1900
Condo/Townhouse/Coop	\$244,000	1,798	3 br, 2.5 baths	Middletown 10940	Middletown sd	
Single family, detached	\$242,900	1,000	2 br, 1 bath	Middletown 10940	Middletown sd	1934 Cape Cod
Condo/Townhouse/Coop	\$242,500	1,345	3 br, 2.5 baths	Mountain Side Hills, Middletown	Middletown sd	
Single family, detached	\$242,000	2,000	3 br, 2 bath	Middletown 10940	Middletown sd	
Condo/Townhouse/Coop	\$240,000	1,507	3 br, 2.5 baths	King Way, Middletown 10940	Middletown sd	
Single family, detached	\$239,900	1,320	3 br, 2 bath	Canterbury Knolls, Middletown	Middletown sd	
Single family, detached	\$239,900	1,144	3 br, 1 baths	Middletown 10940	Middletown sd	1935
Single family, detached	\$239,900	1,420	4 br, 1.5 baths	Middletown 10940	Minisink Valley sd	1940
Single family, detached	\$239,900	1,036	3 br, 1 baths	Middletown 10941	Pine Bush sd	
Single family, detached	\$239,900	1,224	3 br, 1 baths	Middletown 10940	Middletown sd	1946
Condo/Townhouse/Coop	\$239,500	1,221	2 br, 2.5 baths	Waters Edge, Middletown 10940	Middletown sd	
Single family, detached	\$239,500	1,615	2 units	Middletown 10940	Middletown sd	1885
Condo/Townhouse/Coop	\$239,499		3 br, 2.5 baths	Middletown 10940	Middletown sd	
Single family, detached	\$239,000	1,464	3 br, 2 bath	Middletown 10940	Middletown sd	1892
Single family, detached	\$239,000	1,162	2 br, 1 bath	Middletown 10940	Middletown sd	1952 ranch
Single family, detached	\$239,000	1,056	3 br, 1 bath	Middletown 10940	Middletown sd	1956
Single family, detached	\$239,000	1,344	3 br, 2 bath	Middletown 10940	Minisink Valley sd	
Single family, detached	\$239,000	1,830	3 br, 1 baths	Middletown 10940	Minisink Valley sd	1920
Single family, detached	\$238,900	1,467	3 br, 1 bath	Middletown 10940	Middletown sd	1920
Single family, detached	\$238,800	1,725	2 br, 1 bath	Middletown 10940	Middletown sd	1935
Single family, detached	\$238,000	1,933	2 units	Middletown 10940	Middletown sd	1853
Single family, detached	\$237,000	1,248	5 br, 2 baths	Middletown 10940	Middletown sd	1920
Condo/Townhouse/Coop	\$236,500	1,345	3 br, 2.5 baths	Mountainside Hills, Middletown	Middletown sd	
Single family, detached	\$235,100		2 units	Middletown 10940	Middletown sd	1885
Single family, detached	\$235,000	1,440	3 br, 1 bath	Middletown 10940	Middletown sd	1903
Condo/Townhouse/Coop	\$235,000	1,300	2 br, 1.5 baths	Clemson, Middletown 10940	Middletown sd	
Single family, detached	\$234,900	1,248	3 br, 1 bath	Middletown 10940	Middletown sd	1920
Condo/Townhouse/Coop	\$234,900	1,500	2 br, 2.5 baths	Deer Run, Middletown 10940	Middletown sd	
Condo/Townhouse/Coop	\$233,500		2 br, 1.5 baths	Middletown 10940	Middletown sd	
Condo/Townhouse/Coop	\$232,222	1,473	2 br, 2.5 baths	Deer Run, Middletown 10940	Middletown sd	
Single family, detached	\$230,000	1,256	3 br, 2 bath	Middletown 10940	Middletown sd	1913
Single family, detached	\$229,999	1,440	3 br, 1 bath	Middletown 10940	Minisink Valley sd	
Single family, detached	\$229,990	1,483	3 br, 2 bath	Middletown 10940	Middletown sd	1900
Condo/Townhouse/Coop	\$229,900		2 br, 2.5 baths	Deer Run, Middletown 10940	Middletown sd	
Single family, detached	\$229,900	2,163	3 br, 2.5 baths	Middletown 10940	Middletown sd	bi-level ranch
Single family, detached	\$229,900	1,440	3 br, 2 bath	Middletown 10940	Middletown sd	1920 vernacular
Single family, detached	\$229,900	1,296	3 br, 1.5 baths	Middletown 10940	Middletown sd	1860
Single family, detached	\$229,900	1,248	2 br, 1 bath	Middletown 10940	Middletown sd	1900
Single family, detached	\$229,900	1,380	3 br, 1 bath	Middletown 10940	Middletown sd	1913
Single family, detached	\$229,900	1,827	2 units	Middletown 10940	Middletown sd	1893 Victorian Folk
Condo/Townhouse/Coop	\$229,900	1,700	3 br, 2.5 baths	Meadows, Middletown 10940	Middletown sd	

**Table 9b: Present Housing Market for the City of Middletown (June 2007)**

<b>Structure Type</b>	<b>Price</b>	<b>Size (sq. ft.)</b>	<b>Rooms/Units</b>	<b>Location</b>	<b>School District</b>	<b>Style/Year Built</b>
Condo/Townhouse/Coop	\$229,500	1,452	3 br, 1.5 baths	Middletown 10940	Middletown sd	
Single family, attached	\$229,000	1,500	3 br, 2.5 baths	Middletown 10940	Middletown sd	
Single family, detached	\$229,000	1,492	4 br, 1 bath	Middletown 10940	Middletown sd	1900 Victorian Folk
Condo/Townhouse/Coop	\$229,000	1,540	3 br, 1.5 baths	Middletown 10940	Middletown sd	
Condo/Townhouse/Coop	\$229,000	2,100	3 br, 1.5 baths	Middletown 10940	Middletown sd	
Condo/Townhouse/Coop	\$225,900	1,531	3 br, 2 bath	Deer Run, Middletown 10940	Middletown sd	
Single family, detached	\$225,000	1,408	3 br, 1.5 baths	Middletown 10940	Middletown sd	1870
Condo/Townhouse/Coop	\$225,000	1,525	3 br, 2.5 baths	Clemson Park, Middletown 10940	Middletown sd	
Single family, detached	\$225,000	2,532	2 units	Middletown 10940	Middletown sd	1895
Single family, detached	\$225,000		2 br, 1 bath	Middletown 10940	Middletown sd	1950 upright wing
Single family, detached	\$224,900	1,000	3 br, 1 bath	Middletown 10940	Middletown sd	1940
Single family, detached	\$224,900	1,400	3 br, 1.5 baths	Ingrassia Road, Middletown 10940	Middletown sd	1947
Single family, detached	\$224,900	1,220	3 br, 1 bath	Middletown 10940	Middletown sd	1913
Condo/Townhouse/Coop	\$224,900	1,460	3 br, 2.5 baths	Spring Hollow, Middletown 10940	Middletown sd	
Condo/Townhouse/Coop	\$224,900	1,460	3 br, 1.5 baths	Pondside, Middletown 10940	Middletown sd	
Single family, detached	\$220,900		4 br, 2 baths	Middletown 10940	Middletown sd	1920
Single family, detached	\$220,000	1,064	3 br, 1 bath	Middletown 10940	Middletown sd	1900
Condo/Townhouse/Coop	\$220,000	1,692	3 br, 2.5 baths	The Meadows, Wallkill, Middletown	Middletown sd	
Single family, detached	\$220,000	1,780	2 units	Middletown 10940	Middletown sd	1900
Single family, detached	\$219,999	1,076	2 br, 1 bath	Middletown 10940	Middletown sd	1949
Single family, detached	\$219,900	1,984	4 br, 1.5 baths	Middletown 10940	Middletown sd	1927
Condo/Townhouse/Coop	\$219,000	1,428	3 br, 1.5 baths	Middletown 10940	Pine Bush sd	
Single family, attached	\$219,000	1,116	3 br, 1 baths	Middletown 10940	Middletown sd	1923
Single family, attached	\$219,000	1,800	2 units	Middletown 10940	Middletown sd	1880
Condo/Townhouse/Coop	\$216,900	1,472	2 br, 1.5 baths	Northern Woods, Middletown 10940	Middletown sd	
Single family, attached	\$216,900	1,472	2 br, 1.5 baths	Middletown 10940	Middletown sd	
Single family, detached	\$215,000	1,172	3 br, 1 bath	Middletown 10940	Middletown sd	1947 Cape Cod
Condo/Townhouse/Coop	\$215,000	1,229	3 br, 1.5 baths	Canterbury Knolls, WallKill,	Middletown sd	
Single family, detached	\$215,000	1,948	3 br, 3 baths	Middletown 10940	Middletown sd	1900
Single family, detached	\$215,000	1,416	2 units	Middletown 10940	Middletown sd	1900
Condo/Townhouse/Coop	\$214,900	1,082	2 br, 1.5 baths	Highland Park, Middletown 10940	Middletown sd	
Single family, detached	\$214,900	1,288	3 br, 1.5 baths	Middletown 10940	Middletown sd	1920
Single family, detached	\$214,900	1,722	2 units	Middletown 10940	Middletown sd	1895
Condo/Townhouse/Coop	\$214,500	1,960	3 br, 1.5 baths	Middletown 10940	Pine Bush sd	
Condo/Townhouse/Coop	\$212,900	1,245	3 br, 2.5 baths	Highland Park, Middletown 10940	Middletown sd	
Single family, detached	\$212,500	1,400	4 br, 2.5 baths	Middletown 10940	Middletown sd	1890
Condo/Townhouse/Coop	\$212,000	1,452	3 br, 2.5 baths	Rolling Meadows, Middletown	Middletown sd	
Single family, detached	\$209,999	1,340	3 br, 1 bath	Middletown 10940	Middletown sd	1956 ranch
Single family, detached	\$209,900	884	2 br, 1 bath	Middletown 10940	Middletown sd	bi-level ranch
Single family, detached	\$209,900	840	3 br, 1 bath	Middletown 10940	Middletown sd	ranch
Condo/Townhouse/Coop	\$209,900	1,246	2 br, 2.5 baths	Spring Hollow, Middletown 10940	Middletown sd	
Single family, detached	\$209,900	1,229	3 br, 1 baths	Middletown 10940	Middletown sd	1948
Condo/Townhouse/Coop	\$209,900	1,400	3 br, 2.5 baths	Hillside Village, Middletown, 10941	Goshen sd	
Single family, detached	\$209,888	1,250	2 br, 1 bath	Middletown 10940	Middletown sd	1939
Condo/Townhouse/Coop	\$209,500	1,291	2 br, 2 bath	Deer Run, Middletown 10940	Middletown sd	
Single family, attached	\$209,000	1,600	4 br, 1.5 baths	Middletown, 10941	Pine Bush sd	
Single family, detached	\$208,900	1,770	3 br, 2 bath	Middletown 10940	Middletown sd	1920
Condo/Townhouse/Coop	\$207,000	1,440	3 br, 1.5 baths	Middletown 10941	Pine Bush sd	
Condo/Townhouse/Coop	\$205,000	1,241	2 br, 2.5 baths	Waters Edge, Middletown 10940	Middletown sd	

**Table 9b: Present Housing Market for the City of Middletown (June 2007)**

<b>Structure Type</b>	<b>Price</b>	<b>Size (sq. ft., Rooms/Units)</b>	<b>Location</b>	<b>School District</b>	<b>Style/Year Built</b>
Condo/Townhouse/Coop	\$205,000	1,408 3 br, 2.5 baths	Middletown 10940	Middletown sd	
Single family, detached	\$205,000	1,525 2 units	Middletown 10940	Middletown sd	1900
Single family, detached	\$204,999	2,114 2 units	Middletown 10940	Middletown sd	1868
Condo/Townhouse/Coop	\$204,900	1,126 2 br, 2 bath	Eagle's Point, Middletown 10940	Middletown sd	
Single family, detached	\$204,900	960 2 br, 1 bath	Middletown 10940	Minisink Valley sd	1947
Condo/Townhouse/Coop	\$202,000	1,200 3 br, 2 bath	King's Way, Middletown 10940	Middletown sd	
Condo/Townhouse/Coop	\$200,000	1,940 3 br, 1.5 baths	Greenway Terrace, Middletown	Pine Bush sd	
Single family, detached	\$199,999	1,558 4 br, 1.5 baths	Middletown 10940	Middletown sd	1885
Single family, attached	\$199,900	1,616 3 br, 1.5 baths	Middletown 10940	Middletown sd	
Single family, detached	\$199,900	1,250 3 br, 1.5 baths	Middletown 10940	Middletown sd	1913
Single family, detached	\$199,900	1,748 2 units	Middletown 10940	Middletown sd	1920
Single family, detached	\$199,900	1,224 3 br, 1.5 baths	Middletown 10940	Middletown sd	1890 vernacular
Single family, detached	\$199,900	2,258 2 units	Middletown 10940	Middletown sd	1880 Italianate details
Single family, detached	\$199,900	1,040 3 br, 1 baths	Middletown 10940	Middletown sd	1955
Condo/Townhouse/Coop	\$199,900	1,314 2 br, 2 bath	Deer Run, Middletown 10940	Middletown sd	
Single family, detached	\$199,900	1,520 2 units	Middletown 10940	Middletown sd	1900
Single family, detached	\$199,000	1,549 3 br, 2 bath	Middletown 10940	Middletown sd	1890 vernacular
Single family, attached	\$199,000	1,484 3 br, 1.5 baths	Middletown 10940	Middletown sd	
Single family, detached	\$199,000	1,008 4 br, 1.5 baths	Middletown 10940	Middletown sd	1900
Single family, detached	\$195,900	1,568 2 units	Middletown 10940	Middletown sd	1903
Condo/Townhouse/Coop	\$195,000	1,291 2 br, 2 bath	Deer Run, Middletown 10940	Middletown sd	
Condo/Townhouse/Coop	\$195,000	974 2 br, 1 bath	Middletown 10940	Middletown sd	
Condo/Townhouse/Coop	\$195,000	1,082 2 br, 1.5 baths	Highland Park, Middletown 10940	Middletown sd	
Single family, detached	\$195,000	1,484 2 units	Middletown 10940	Middletown sd	Victorian 1900
Single family, detached	\$195,000	1,762 4 br, 2 baths	Middletown 10940	Middletown sd	1900
Single family, attached	\$194,900	1,440 3 br, 1.5 baths	Middletown, 10941	Goshen sd	
Condo/Townhouse/Coop	\$194,900	1,440 3 br, 1.5 baths	Middletown, 10941	Pine Bush sd	
Condo/Townhouse/Coop	\$194,000	1,188 3 br, 1.5 baths	Rolling Meadows, Walkill,	Middletown sd	
Condo/Townhouse/Coop	\$192,000	1,140 2 br, 2 bath	Hillside Village, Middletown, 10941	Goshen sd	
Single family, detached	\$190,000	2,288 3 br, 1 bath	Middletown 10940		1957 Ranch
Condo/Townhouse/Coop	\$190,000	3 br, 2.5 baths	The Meadows, Walkill, Middletown	Middletown sd	
Condo/Townhouse/Coop	\$190,000	1,177 2 br, 2.5 baths	Fairlawn Estates, Middletown 10940	Middletown sd	
Single family, detached	\$189,900	1,184 4 br, 1 bath	Middletown 10940	Middletown sd	1900
Condo/Townhouse/Coop	\$189,900	1,133 2 br, 1.5 baths	Middletown 10940	Middletown sd	
Single family, detached	\$189,900	1,480 3 br, 1 baths	Middletown 10940	Middletown sd	1920
Condo/Townhouse/Coop	\$189,000	1,496 3 br, 1.5 baths	Middletown 10940	Middletown sd	
Single family, detached	\$185,900	1,034 3 br, 1.5 baths	Middletown 10940	Middletown sd	1913
Condo/Townhouse/Coop	\$185,000	1,082 2 br, 1.5 baths	Highland Park, Middletown 10940	Middletown sd	
Condo/Townhouse/Coop	\$185,000	1,177 3 br, 1.5 baths	Fairlawn Estates, Middletown 10940	Middletown sd	
Single family, detached	\$184,900	878 2 br, 1 bath	Middletown 10940	Middletown sd	1953
Single family, detached	\$184,900	1,306 3 br, 1 bath	Middletown 10940	Middletown sd	1870
Single family, detached	\$184,900	1,330 2 br, 2 bath	Middletown 10940	Middletown sd	1930
Condo/Townhouse/Coop	\$182,000	1,133 2 br, 1.5 baths	Highland Park, Middletown 10940	Middletown sd	
Condo/Townhouse/Coop	\$181,900	1,117 2 br, 2 bath	Phillips Mews, Middletown 10940	Middletown sd	
Condo/Townhouse/Coop	\$181,900	898 2 br, 2 bath	Eagle's Point, Middletown 10940	Middletown sd	
Single family, detached	\$180,000	1,400 3 br, 1 bath	Middletown 10940	Middletown sd	1890 vernacular
Condo/Townhouse/Coop	\$180,000	1,596 3 br, 1.5 baths	Middletown 10940	Middletown sd	
Single family, detached	\$179,999	1,040 2 br, 1 bath	Middletown 10940	Middletown sd	1920 vernacular
Single family, detached	\$179,900	1,104 3 br, 1 bath	Middletown 10940	Middletown sd	

**Table 9b: Present Housing Market for the City of Middletown (June 2007)**

<b>Structure Type</b>	<b>Price</b>	<b>Size (sq. ft.)</b>	<b>Rooms/Units</b>	<b>Location</b>	<b>School District</b>	<b>Style/Year Built</b>
Single family, detached	\$179,900	1,250	2 br, 1 bath	Middletown 10940	Middletown sd	1893
Condo/Townhouse/Coop	\$179,900	1,146	2 br, 2 bath	Middletown 10940	Middletown sd	
Condo/Townhouse/Coop	\$179,000		2 br, 1 bath	Middletown 10940	Goshen sd	
Condo/Townhouse/Coop	\$179,000	1,188	3 br, 1.5 baths	The Meadows, Walkkill, Middletown	Middletown sd	
Condo/Townhouse/Coop	\$178,900	1,133	2 br, 1.5 baths	Highland Park, Middletown 10940	Middletown sd	
Single family, detached	\$175,900	816	2 br, 1 bath	Middletown 10940	Middletown sd	
Single family, detached	\$175,000		2 br, 1 bath	Middletown 10940	Middletown sd	Cape Cod
Single family, detached	\$174,825	1,160	2 br, 1 bath	Middletown 10940	Middletown sd	
Condo/Townhouse/Coop	\$171,900	1,150	2 br, 2 bath	Hillside Village, Middletown, 10941	Goshen sd	
Single family, attached	\$170,000	1,652		Middletown 10940	Middletown sd	
Single family, detached	\$170,000	1,350	3 br, 1 baths	Middletown 10941	Middletown sd	
Single family, detached	\$169,900	1,176	3 br, 2 bath	Middletown 10940	Middletown sd	1918 foursquare
Single family, detached	\$169,900		3 br, 1 baths	Middletown 10940	Pine Bush sd	
Single family, attached	\$169,900	1,220	3 br, 1.5 baths	Middletown 10940	Middletown sd	
Single family, detached	\$169,000	1,033	3 br, 1 baths	Middletown 10940	Middletown sd	1920
	\$167,900	2,094	3 br, 2 bath	Middletown 10940	Minisink Valley sd	
Single family, detached	\$165,900	1,656	4 br, 1 bath	Middletown 10940		
Condo/Townhouse/Coop	\$165,000	924	2 br, 2 bath	Buttonwood Hills, Middletown 10940	Middletown sd	
Single family, detached	\$164,900	1,669	3 units	Middletown 10940	Middletown sd	
Single family, detached	\$164,321	832	2 br, 1 bath	Middletown 10940	Middletown sd	1949
Single family, detached	\$162,000	1,044	3 br, 1 bath	Middletown 10940	Middletown sd	
Single family, detached	\$159,999	1,472	3 br, 1.5 baths	Middletown 10940	Middletown sd	
Single family, detached	\$159,900	1,102	2 br, 1 bath	Middletown 10940	Middletown sd	
Condo/Townhouse/Coop	\$159,900	995	2 br, 2 bath	Buttonwood Hills, Middletown 10940	Middletown sd	
Condo/Townhouse/Coop	\$159,900	924	2 br, 2 bath	Buttonwood Hills, Middletown 10940	Middletown sd	
Condo/Townhouse/Coop	\$159,900	1,120	3 br, 1.5 baths	Walkkill, Middletown 10940	Middletown sd	
Condo/Townhouse/Coop	\$159,900	924	2 br, 2 bath	Buttonwood Hills, Middletown 10940	Middletown sd	
Single family, detached	\$158,000	1,224	3 br, 1 bath	Middletown 10940	Middletown sd	
Condo/Townhouse/Coop	\$155,000	1,070	2 br, 1.5 baths	Buttonwood, Middletown 10940	Middletown sd	
Condo/Townhouse/Coop	\$155,000	1,528	3 br, 1.5 baths	Middletown 10940	Middletown sd	
Condo/Townhouse/Coop	\$154,900	945	1 br, 1 bath	Highland Park, Middletown 10940	Middletown sd	
Condo/Townhouse/Coop	\$154,900	785	1 br, 1.5 bath	Spring Hollow, Middletown 10940	Middletown sd	
Single family, detached	\$150,000	936	2 br, 1 bath	Middletown 10940	Middletown sd	1890
Condo/Townhouse/Coop	\$149,900		2 br, 2 bath	Hillside Village, Scotchtown,	Goshen sd	
Single family, detached	\$149,900	850	2 br, 1 bath	Middletown 10940	Minisink sd	
Condo/Townhouse/Coop	\$149,900	924	2 br, 2 bath	Buttonwood, Middletown 10940	Middletown sd	
Single family, detached	\$149,900	1,008	3 br, 1 baths	Middletown 10940	Middletown sd	1893
Single family, detached	\$149,500	1,374	3 br, 1 baths	Middletown 10940	Middletown sd	1928
Condo/Townhouse/Coop	\$148,000		2 br, 1 bath	Inwood Hills, Middletown 10941	Pine Bush sd	
Condo/Townhouse/Coop	\$148,000		3 br, 1.5 baths	Middletown 10940	Middletown sd	
Condo/Townhouse/Coop	\$147,500	800	2 br, 1 bath	Middletown 10940	Pine Bush sd	
Single family, attached	\$144,900	994	2 br, 1 bath	East View, Middletown 10940	Middletown sd	
Single family, detached	\$144,900	1,682	2 units	Middletown 10940	Middletown sd	1920
Condo/Townhouse/Coop	\$142,900		2 br, 1 bath	Middletown 10940	Pakanasink	
Single family, detached	\$139,900	864	2 br, 1 bath	Middletown 10940	Minisink sd	
Single family, detached	\$139,900	1,008	4 br, 1 bath	Middletown 10940	Middletown sd	1903 Colonial Revival
Single family, detached	\$130,725	1,644	4 br, 1 bath	Middletown 10940	Middletown sd	Colonial
Condo/Townhouse/Coop	\$129,900		2 br, 1 bath	Inwood Hills, Middletown 10941	Pine Bush sd	
Condo/Townhouse/Coop	\$129,900	750	1 br, 1 bath	Eastview, Middletown 10940	Middletown sd	

**Table 9b: Present Housing Market for the City of Middletown (June 2007)**

<b>Structure Type</b>	<b>Price</b>	<b>Size (sq. ft.)</b>	<b>Rooms/Units</b>	<b>Location</b>	<b>School District</b>	<b>Style/Year Built</b>
Condo/Townhouse/Coop	\$119,000	800	1 br, 1 bath	Middletown, 10941	Pine Bush sd	
Condo/Townhouse/Coop	\$118,000	735	1 br, 1 bath	Buttonwood Hills, Middletown 10940	Middletown sd	
Condo/Townhouse/Coop	\$114,900	750	1 br, 1 bath	Inwood Condominium, Middletown	Pine Bush sd	
Single family, detached	\$105,000	1,300	3 br, 1 baths	Middletown 10940	Middletown sd	1920
Single family, detached	\$99,000	600	2 br, 1 baths	Middletown 10940	Middletown sd	1920
Single family, detached	\$75,000	740	2 br, 1 baths	Middletown 10940	Middletown sd	1920
Single family, detached	unlisted	1,248	3 br, 1.5 baths	Middletown 10940		
1987 Astro Trailer	unlisted	14' x 70'	2 br, 1 bath	Middletown		
1985 Pine Grove Trailer	unlisted	24' x 48'	2 br, 2 bath	Middletown		

**References**

*The Real Estate Book* Rockland/Orange Counties, NY vol. 13, no.8  
Middletown Home Listings. Available online from <http://www.realtor.com> Accessed June 7-12, 2007

Table 10: Overcrowding Rates for the City of Middletown and Orange County, New York, 1990-2005

City of Middletown, New York														
Characteristic	1980		1990		2000		2005*		1980-1990		1990-2000		2000-2005*	
	Number	Percent	Number	Percent	Number	Percent	Number	Percent	Number	Percent Change	Number	Percent Change	Number	Percent Change
<i>Occupants per Room</i>	-	-	8,790	100%	9,478	100%	-	-	-	-	688	7.3%	-	-
1.0 or less	-	-	8,407	95.6%	8,722	92.0%	-	-	-	-	315	3.6%	-	-
1.1 - 1.50 (overcrowded)	-	-	249	2.8%	395	4.2%	-	-	-	-	146	58.6%	-	-
1.51 or more (severe overcrowded)	-	-	134	1.5%	361	3.8%	-	-	-	-	227	169.4%	-	-
			383	4.36%	756	7.98%					373	97.39%		

Orange County, New York														
Characteristic	1980		1990		2000		2005		1980-1990		1990-2000		2000-2005	
	Number	Percent	Number	Percent	Number	Percent	Number	Percent	Number	Percent Change	Number	Percent Change	Number	Percent Change
<i>Occupants per Room</i>	-	-	101,306	100%	38,370	100%	123,376	100%	-	-	(62,936)	-62.1%	85,006	221.5%
1.0 or less	-	-	97,912	96.6%	37,889	98.7%	118,770	96.3%	-	-	(60,023)	-61.3%	80,881	213.5%
1.1 - 1.50 (overcrowded)	-	-	2,452	2.4%	331	0.9%	3,264	2.6%	-	-	(2,121)	-86.5%	2,933	886.1%
1.51 or more (severe overcrowded)	-	-	942	0.9%	150	0.4%	1,342	1.1%	-	-	(792)	-84.1%	1,192	794.7%
			3394	3.35%	481	1.25%					-2913	-605.61%		

References:

1990 data available from Table H021, S1 File, <http://factfinder.census.gov>  
 2000 data available from Table H20, S3 file, <http://factfinder.census.gov>  
 2005 data available from American Fact Finder 2005 Data Profiles, <http://factfinder.census.gov>

\*data not available

Table 11: Labor and Industry Employment for the City of Middletown and Orange County, New York, 1980-2005(7)

		City of Middletown, New York															
Sector Label	Characteristic	1980		1990		2000		2007*		1980-1990		1990-2000		2000-2007*		1980-2000	
		Number	Percent	Number	Percent	Number	Percent	Number	Percent	Number	Percent Change	Number	Percent Change	Number	Percent Change	Number	Percent Change
	<i>Labor Force Employment</i>	10,211	100%	12,172	100%	11,600	100%	-	-	1,961	19.2%	(572)	-4.7%	-	-	1,389	13.6%
	Employed	8,338	81.7%	11,376	93.46%	10,852	93.6%	-	92.9%**	3,038	36.4%	(524)	-4.6%	-	-	2,514	30.2%
	Unemployed	1,873	18.3%	796	6.54%	748	6.4%	-	7.1%**	(1,077)	-57.5%	(48)	-6.0%	-	-	(1,125)	-60.1%
	<i>Employment by Industry Sector</i>	8,338	100%	11,376	100%	10,852	100%	-	-	3,038	36.4%	(524)	-4.6%	-	-	2,514	30.2%
A	Agriculture, forestry, fishing and hunting, and mining	69	0.8%	173	1.5%	117	1.1%	-	-	104	150.7%	(56)	-32.4%	-	-	48	69.6%
B	Construction	297	3.6%	588	5.2%	638	5.9%	-	-	291	98.0%	50	8.5%	-	-	341	114.8%
C	Manufacturing	1,580	18.9%	1,432	12.6%	992	9.1%	-	-	(148)	-9.4%	(440)	-30.7%	-	-	(588)	-37.2%
D	Wholesale trade	265	3.2%	500	4.4%	389	3.6%	-	-	235	88.7%	(111)	-22.2%	-	-	124	46.8%
E	Retail trade	1,520	18.2%	2,039	17.9%	1,524	14.0%	-	-	519	34.1%	(515)	-25.3%	-	-	4	0.3%
F	Transportation and warehousing, and utilities	343	4.1%	603	5.3%	533	4.9%	-	-	260	75.8%	(70)	-11.6%	-	-	190	55.4%
G	Information	198	2.4%	363	3.2%	234	2.2%	-	-	165	83.3%	(129)	-35.5%	-	-	36	18.2%
H	Finance and insurance, and real estate and rental and leasing	355	4.3%	695	6.1%	640	5.9%	-	-	340	95.8%	(55)	-7.9%	-	-	285	80.3%
I	Professional, scientific, and management, and administrative and waste management services	508	6.1%	861	7.6%	771	7.1%	-	-	353	69.5%	(90)	-10.5%	-	-	263	51.8%
J	Educational services, and health care, and social assistance	2,214	26.6%	2,541	22.3%	2,833	26.1%	-	-	327	14.8%	292	11.5%	-	-	619	28.0%
K	Arts, entertainment, and recreation, and accommodation, and food services	338	4.1%	79	0.7%	769	7.1%	-	-	(259)	-76.6%	690	873.4%	-	-	431	127.5%
L	Other services, except public administration	237	2.8%	770	6.8%	624	5.8%	-	-	533	224.9%	(146)	-19.0%	-	-	387	163.3%
M	Public administration	414	5.0%	732	6.4%	788	7.3%	-	-	318	76.8%	56	7.7%	-	-	374	90.3%

\*data not available

\*\*ESRI Data (estimated)

References:

1980 data available from [www.infoshare.org](http://www.infoshare.org)

1990 data available from [www.infoshare.org](http://www.infoshare.org)

2000 data available from Table P43, S3 file, <http://factfinder.census.gov>

2005 data available from American Fact Finder 2005 Data Profiles, <http://factfinder.census.gov>

ESRI Business Analyst Online (accessed August 2, 2007)

Table 12: Location Quotients for Middletown Local Economy to Orange County Regional Economy, 2000

<i>Employment by Industry Sector</i>		1980	1990	Percent Change 1980-90	2000	Percent Change 1990-2000	Percent Change 1980-2000
Total Employment		8,338	11,376	36%	10,852	-5%	30%
A	Agriculture, forestry, fishing and hunting, and mining	0.40	0.72	80%	<b>1.06</b>	47%	166%
B	Construction	0.67	0.73	9%	0.87	18%	29%
C	Manufacturing	0.96	0.83	-13%	0.90	8%	-6%
D	Wholesale trade	0.77	0.93	20%	0.89	-4%	15%
E	Retail trade	1.10	1.07	-3%	<b>1.04</b>	-2%	-5%
F	Transportation and warehousing, and utilities	0.85	1.02	21%	0.82	-20%	-3%
G	Information	0.66	0.92	39%	0.62	-33%	-6%
H	Finance and insurance, and real estate and rental and leasing	0.82	1.04	27%	0.92	-11%	13%
I	Professional, scientific, and management, and administrative and waste management services	1.32	1.19	-10%	0.93	-22%	-30%
J	Educational services, and health care, and social assistance	1.28	1.14	-11%	<b>1.10</b>	-4%	-15%
K	Arts, entertainment, and recreation, and accommodation, and food services	1.10	0.60	-46%	<b>1.28</b>	116%	16%
L	Other services, except public administration	0.78	1.05	35%	<b>1.38</b>	31%	78%
M	Public administration	0.83	1.06	28%	0.96	-9%	16%

References:

1980 data available from [www.infoshare.org](http://www.infoshare.org)  
 1990 data available from [www.infoshare.org](http://www.infoshare.org)  
 2000 data available from Table P43, S3 file, <http://factfinder.census.gov>  
 2005 data available from American Fact Finder 2005 Data Profiles, <http://factfinder.census.gov>  
 ESRI Business Analyst Online (accessed August 2, 2007)